

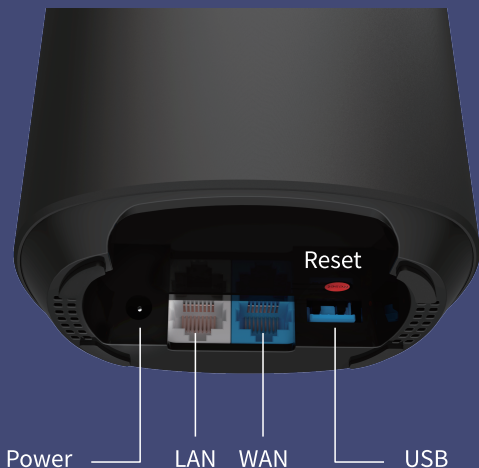
The logo for the M2 Bee MESH Node. It features the text "M2 Bee" in a large, bold, sans-serif font, with a small Wi-Fi symbol above the "e". Below "M2 Bee" is the text "MESH Node" in a smaller, all-caps, sans-serif font. The entire logo is centered within a white circular frame that is part of a larger design of concentric white circles on a red background.

M2 Bee
MESH Node

**Set-up
Guide**

Thank you for choosing the Mercku M2 router

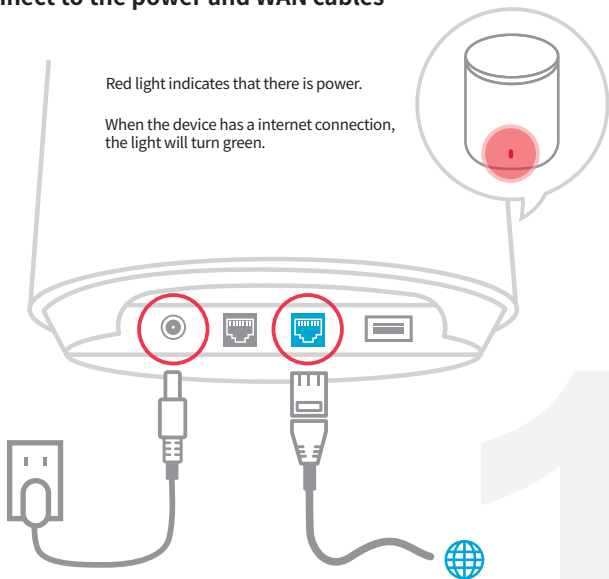
Set-up in 3 steps



Port configuration

Set-up Guide




1. Connect to the power and WAN cables



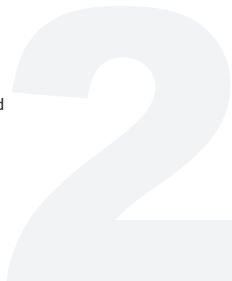
For MESH set-up instructions please visit www.mercku.tech/help

2. Connect to Wi-Fi

Use your mobile device or computer to search for and connect to the **MERCKU-XXXX** Wi-Fi network (no password required).

MERCKU-XXXX		Connect
Wi-Fi-XXXX		
Wi-Fi-XXXX		

* **MERCKU-XXXX** is generated from the device's serial number - to find this, please locate at the bottom.



3. Open browser or app

Visit mywifi.mercku.tech through a browser to complete setup.

Or scan the [QR code](#) to download the app to complete the setup and manage the network.



Thank you for choosing the Mercku M2 Bee node

Set-up in 1 step



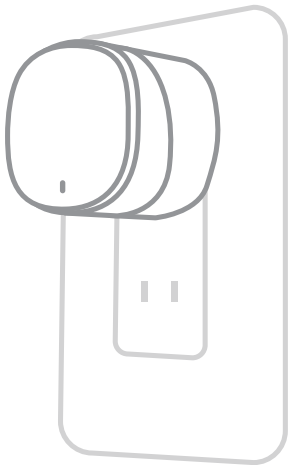
! You need a working M2 router
to use the M2 Bee mesh node.

Need help setting up your M2 router?
Please scan this QR code:

Or visit: www.mercku.tech/help



Set-up Guide



After you install the M2 Wi-Fi router, you will only need to [plug in the Bee nodes](#) and the mesh system will be created [automatically](#).



- ★ After the mesh system is created successfully, the Bee node's indicator light will turn green and stop blinking.



- ★ If the Bee node's indicator light blinks, it means that the signal is weak. Please move the Bee node closer to the other nodes (Bees or M2s) in the mesh network.



- ★ If the Bee node fails to connect to the mesh system or there is no internet, the Bee's indicator light will be red and steady. Please check the network status of the M2 host router or shorten the distance between the Bee node and the other nodes (Bees or M2s)

Download the Mercku app

Control your mesh network
from anywhere, anytime



- ❗ If you want to connect the Bee node to a different M2 Wi-Fi router, from a separate package, please follow the instructions from the link below:

🌐 www.mercku.tech/help