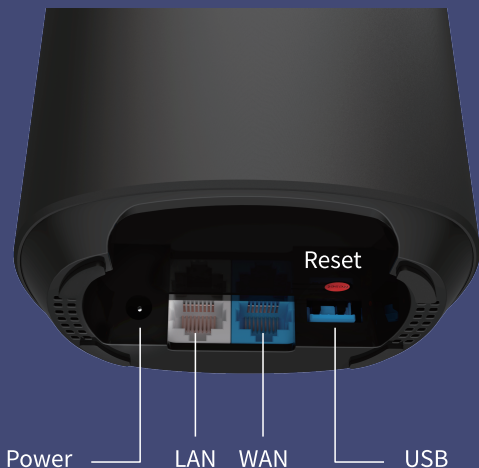




Set-up Guide

Thank you for choosing the Mercku M2 router

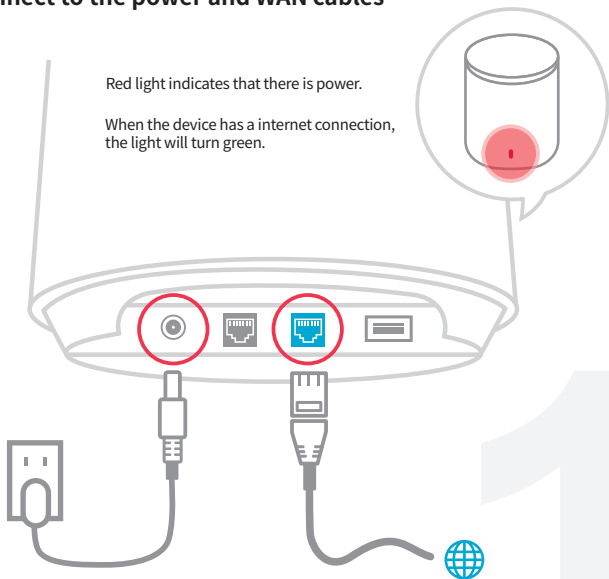
Set-up in 3 steps



Port configuration

Set-up Guide




1. Connect to the power and WAN cables



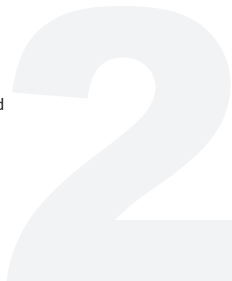
For MESH set-up instructions please visit www.mercku.tech/help

2. Connect to Wi-Fi

Use your mobile device or computer to search for and connect to the **MERCKU-XXXX** Wi-Fi network (no password required).

MERCKU-XXXX		Connect
Wi-Fi-XXXX		
Wi-Fi-XXXX		

* **MERCKU-XXXX** is generated from the device's serial number - to find this, please locate at the bottom.



3. Open browser or app

Visit mywifi.mercku.tech through a browser to complete setup.

Or scan the [QR code](#) to download the app to complete the setup and manage the network.





Need help?

 www.mercku.tech/help