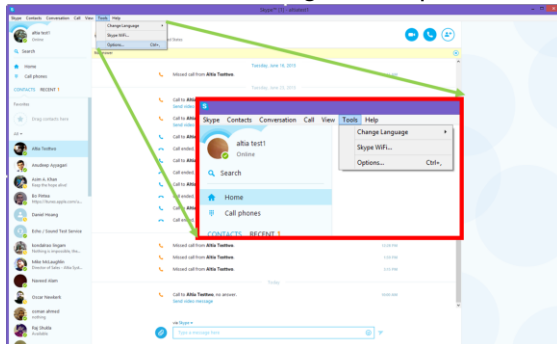


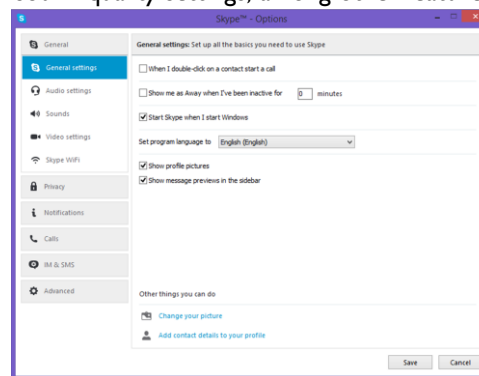
(1) Access Call Settings

- Once you are on your call home screen, change your call settings by selecting “Tools” in the task bar and navigate to “Options.”



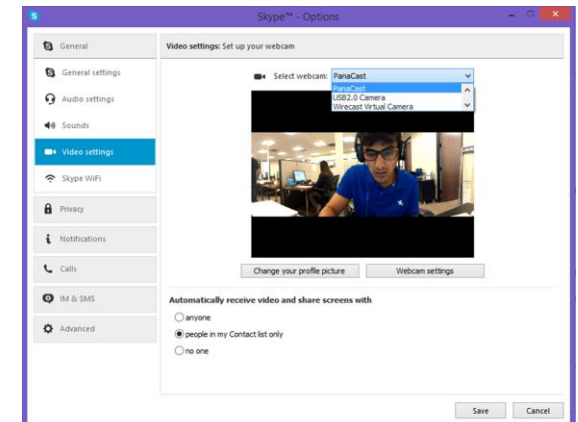
(2) Edit Video Settings

- After you click “Options”, the “Settings” menu will appear. Here, you can change video and sound quality settings, among other features.



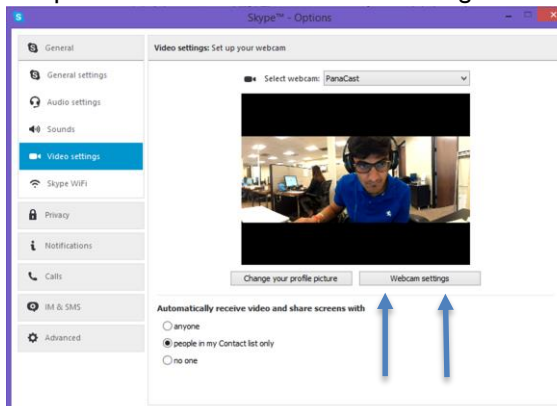
(3) Select PanaCast Camera

- Select “PanaCast” as your webcam in the drop down menu.



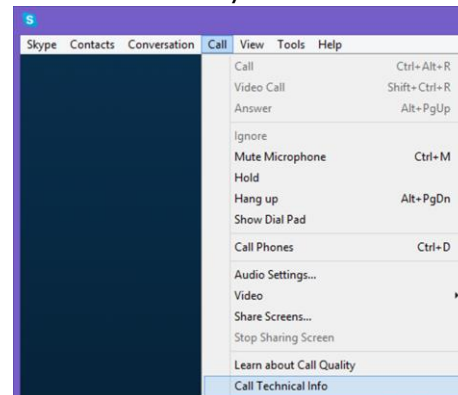
(4) Change Webcam Settings

- To change your webcam settings, click on “Webcam Settings” beneath your video preview to edit more advanced settings.



(5) Track Call Info

- To track call stats and info click “Call” within the taskbar and select “Call Technical Info” for more details on your call



Digital Zoom with PanaCast ePTZ

PanaCast allows the host user to digitally pan, tilt and zoom in their video stream using the PanaCast ePTZ app. To find out more, please click [here](#) for instructions.



Altia Systems, Inc. | 10020 North De Anza Blvd., Suite 200 | Cupertino, CA 95014 | Office: 1(408) 996 9710

Contact us: support@altiasystems.com