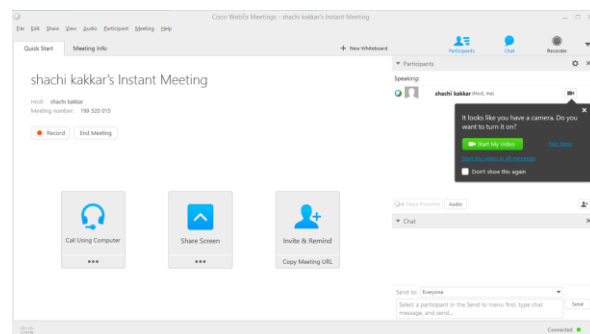


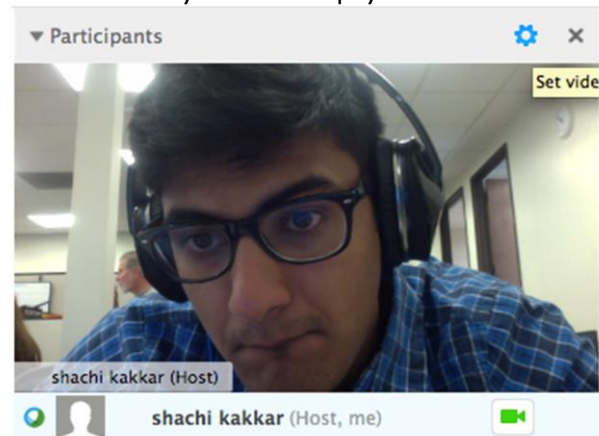
## (1) Make a Cisco WebEx Call

- This is the screen that will appear when you want to make a call in WebEx.



## (2) Access Call Settings

- To change your call settings, select the "Gear" icon above your video display.



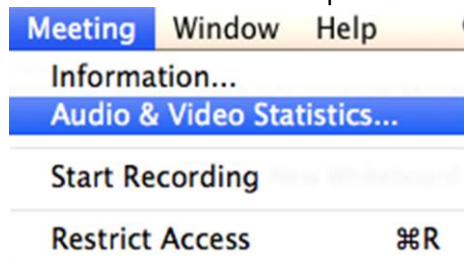
## (3) Select PanaCast Camera

- Select "PanaCast" as your camera in the drop down menu.



## (4) Tracking Call Stats

- To get Call Info click Meeting and then select the "Audio & Video Statistics..." option.



## Digital Zoom with PanaCast ePTZ

PanaCast allows the host user to digitally pan, tilt and zoom in their video stream using the PanaCast ePTZ app. To find out more, please click [here](#) for instructions.



Altia Systems, Inc. | 10020 North De Anza Blvd., Suite 200 |  
Cupertino, CA 95014 | Office: 1(408) 996 9710

Contact us: [support@altiasystems.com](mailto:support@altiasystems.com)