

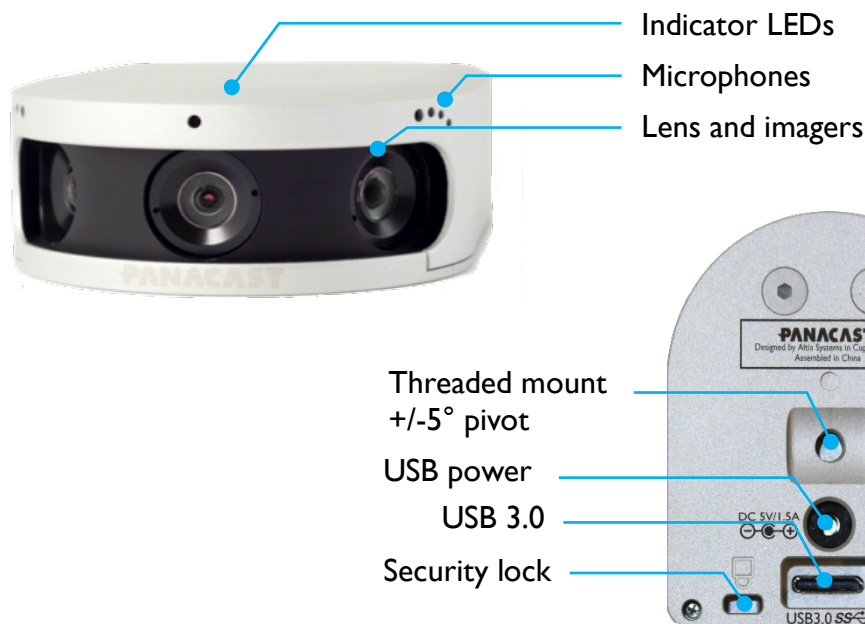
SET-UP GUIDE

PanaCast[®] 2 Camera

Industry-First Panoramic-4k USB Plug-and-Play Video Camera



The PanaCast[®] 2 video camera is a Plug-and-Play device that uses USB ports on a Mac or PC to deliver a high-quality, 180° field of view, Panoramic-4K video stream, along with HD stereo microphone. PanaCast 2 produces a natural looking video stream by combining video streams from three imagers simultaneously to achieve an extended field of view without sacrificing resolution. This UVC compliant device requires no additional drivers or software to operate properly.



Contents:

What’s in the Box 3

Getting Started..... 3

 Camera Set up..... 3

 Camera Positioning 3

 Camera Assembly..... 4

 Use PanaCast 2 with Collaboration Apps..... 5

Trouble shooting..... 5

 I am unable to see my camera in my Collaboration app..... 5

 My camera is not displaying any video. 5

Safety & Care 5

Technical support..... 5

Specifications: 6

About Altia Systems 6

What's in the Box



PanaCast® 2
Camera



USB 3.0 Cable
(1m)



Power Adapter
Cable (1.5m)



Power
Adapter



Wall Mount
(optional)



Camera Stand
(optional)



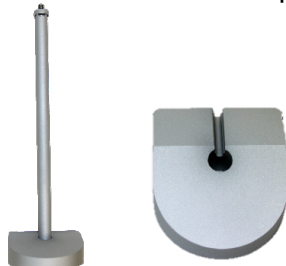
Getting Started

Camera Set up

When placing an order for the PanaCast® 2 camera, choose either a camera stand or a wall mount.

Camera Stand

- 27.5 cm tall (fixed) and 7.2 cm wide at base
- Aluminum stand with 5° adjustable tilt at top
- Camera stands higher than a typical laptop screen for unrestricted view of participants



Camera Wall Mount

- Simple and compact for easy installation
- Screw holes for wall mounting
- Includes standard 1/4" – 20 camera mount screw



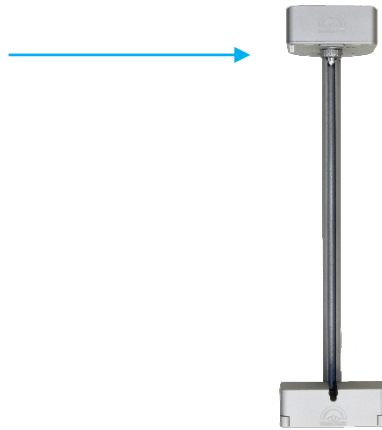
Camera Positioning

- Recommend position 4 – 6 feet above the ground
- Minimum 3 feet away from the nearest participant when using either the wall mount or camera stand

- Avoid facing bright lights (bright lit windows)*

Camera Assembly

Step 1: Attach camera head onto stem of stand

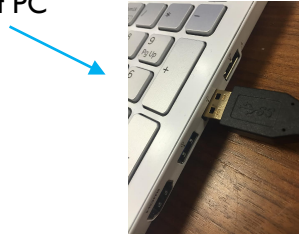


Connect PanaCast® 2 (Mac or PC)

Step 1: Plug Power Adapter Cable into camera head and Power Adapter



Step 2: Plug USB cable into camera head and USB 3.0 or 2.0 port of PC



Step 3: Push Power Adapter Cable and USB cable in slot at back of the stem



LED Indicators

The LED indicators represent the state of the camera.

- Blinking blue: Camera is initializing
- Solid blue: Camera in standby mode
- Solid white: Camera is streaming video



LED Indicators

Use PanaCast 2 with Collaboration Apps

Add panoramic video with an HD microphone to existing apps and services such as:

- Skype®
- Skype® for Business
- Cisco WebEx®
- Citrix® GoToMeeting®
- Zoom
- Blue Jeans
- Google® Hangouts™

[See User Guides](#)

Trouble shooting

The LED indicators on the camera are not lit even though the camera is attached to the PC.

Please make sure the power cable is connected to the camera and the power brick is plugged into an AC source.

Make sure that the USB cable is connected at both ends (camera and PC).

I am unable to see my camera in my Collaboration app.

Make sure that the USB cable is connected at both ends (camera and PC).

My camera is not displaying any video.

Make sure you have selected your PanaCast camera in your Collaboration app video settings. For more information, refer to the [3rd party set-up guides](#).

Safety & Care

- Do not hold the camera head in your bare hands while in operation. Prolonged handling of the camera in operation can result in hazard.
- Do not bring the PanaCast 2 camera in contact with liquids.

Technical support

For technical support, contact support@getpanacast.com or call (408) 996-9710. For all other inquiries contact info@getpanacast.com.

Specifications:

Tech Specifications

- Panoramic-4k: 3840 x 1088; 4.15 MP YUV 4:2:2, MJPEG
- HD: 1920 x 1088; 2.1 MP YUV 4:2:2, MJPEG
- ~180° (H) x 54° (V)
- 188° DFOV
- Adjustable FOV through UVC PTZ command set
- Frame rate up to 30fps
- Latency: <= 5ms
- 5V Power Jack
- 0.3m to Infinity – Fixed Focus (each imager)
- 10 Lux
- Motion JPEG Built-in
- Auto 50/60 Hz Detect Built-In
- Color Controls
 - Sharpness
 - Brightness
 - Gamma
 - Saturation Control
 - White Balance (Man.)
- Status Indicator
 - LEDs Built-in
 - Lightweight ePTZ App (optional)
- Product Certifications
 - FCC Part 15 Class A (for commercial use only)
 - ROHS, REACH Compliant

System Requirements

- Plug-and-Play for Windows and Mac applications
- Supports USB Video Class (UVC) Driver
- USB 2.0/3.0
- Windows 7,8,8.1 or later
- Mac OS X 10.9 or later

Product Information

- Weight: 125g
- Width: 60 mm
- Height: 25 mm
- Length: 74 mm
- Operating Temperature: 0° C - 40° C
- Operating Humidity: 15%-85% (Non-Condensing)

What's In The Box?

- PanaCast® 2 Camera
- Table Stand/Wall Mount
- Quick Reference Guide
- USB 3.0 cable
- Power Adapter

Warranty

- You can find a detailed description of our [Warranty](#).

This device complies with part 15 of the FCC Rules. Operation is subject to the following two conditions: (1) This device may not cause harmful interference, and (2) this device must accept any interference received, including interference that may cause undesired operation.

About Altia Systems



Altia Systems, Inc.
10020 N. De Anza Blvd, Suite 200
Cupertino, CA 95015
1-408-996-9710
www.getpanacast.com



Altia Systems® (altiasystems.com) is a venture-backed company based in Cupertino, CA, and is the creator of the PanaCast® Experience solution. The award-winning PanaCast® offers a unique experience that enables anyone on desktop or mobile to communicate in interactive, real-time Panoramic-HD 200° field-of-view video that replicates the human panoramic perspective.