

IP Broadcasting System

User manual



1. IP Broadcast System Hardware and Operating System Demands

1.1 Lowest Demands of Computer Hardware

- I. CPU : Intel Core Quad 3.0GHz
- II. RAM : 4GB
- III. Standard sound card with microphone input
- IV. Network card above 100M

5. SSD 128G (Recommended)

1.2 Operating system demands

- I. It supports Windows XP / Windows 7 / Windows 8 / Windows 10
- II. According to the language of the operating system, the software supports Chinese/English display interface

1.3 Network bandwidth demands

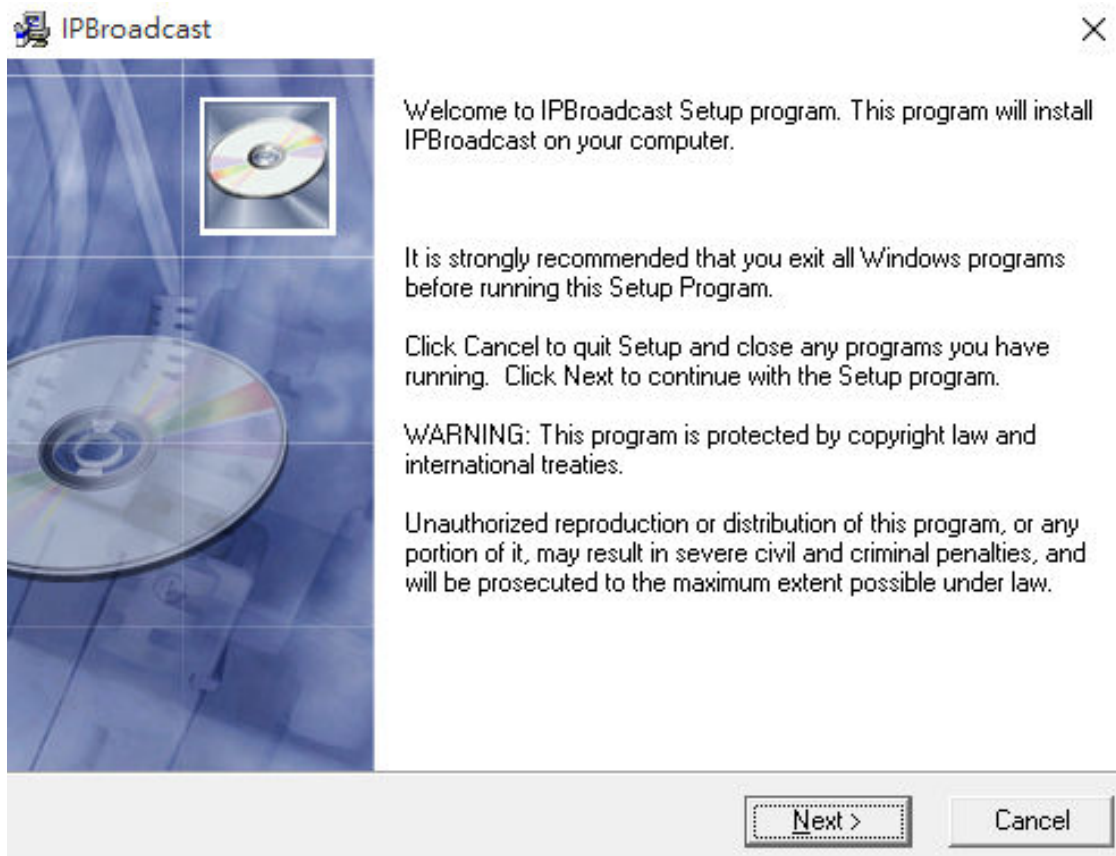
Calculating according to a single broadcast point, the bandwidth of the broadcast system is about 150k bits,

The bandwidth of the broadcast system is about 1.5M bits if it is calculated according to 10 broadcast points, and so on

2. IP Broadcast System Installation Flow

Step 1

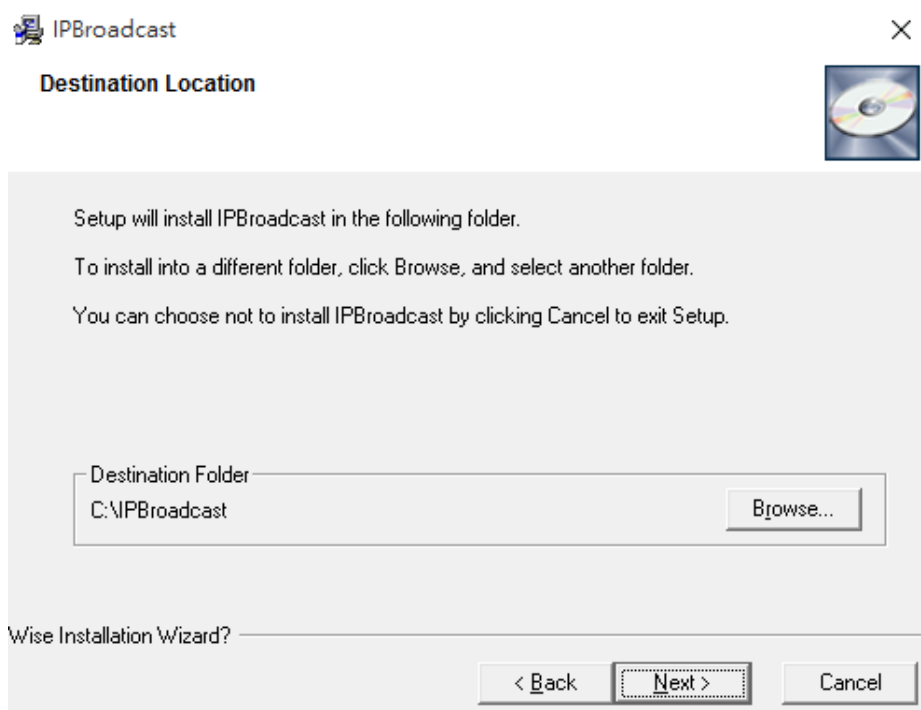
Execute IP Broadcast.exe installation file, and wait until the installation picture occurs, press [Next] to continue the installation flow, as shown in the following picture



Step 2

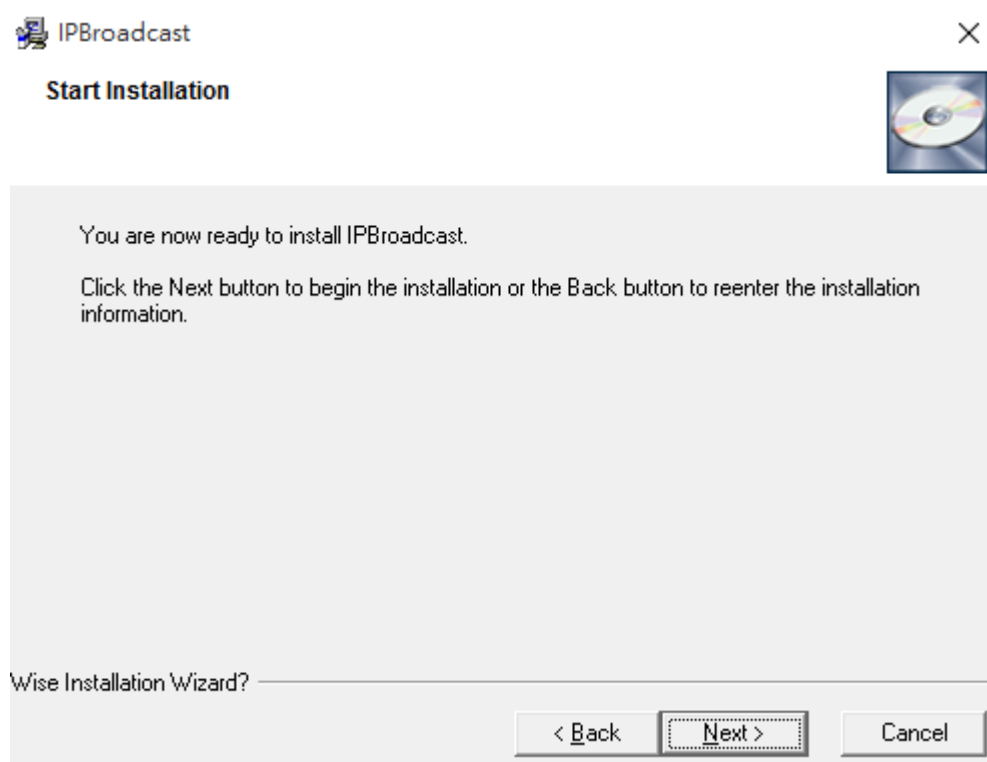
The name of the program preset path and file folder is C:\IPBroadcast, please press [Next] to continue the installation flow if you do not change the path, as shown in the following picture

(Attention: please select the program installation path in the root directory of the disc due to access of the system's file folder, to avoid problems during execution of the program)



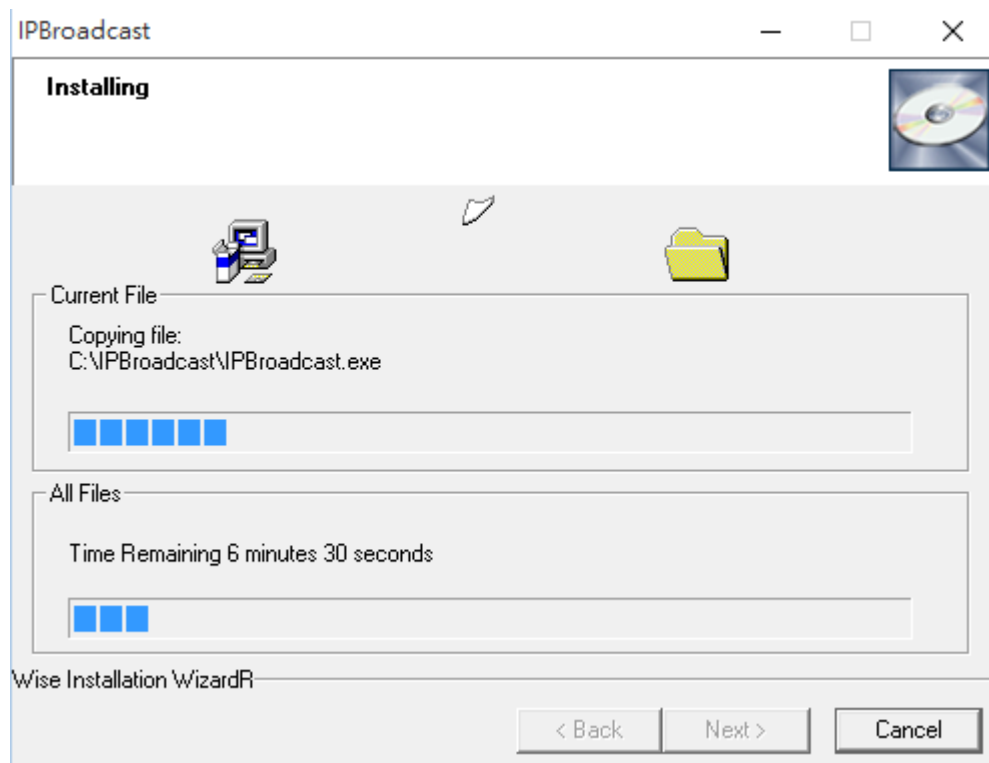
Step 3

Confirm whether to start program installation, if there is no problem, please press [Next] to continue the installation flow, as shown in the following picture



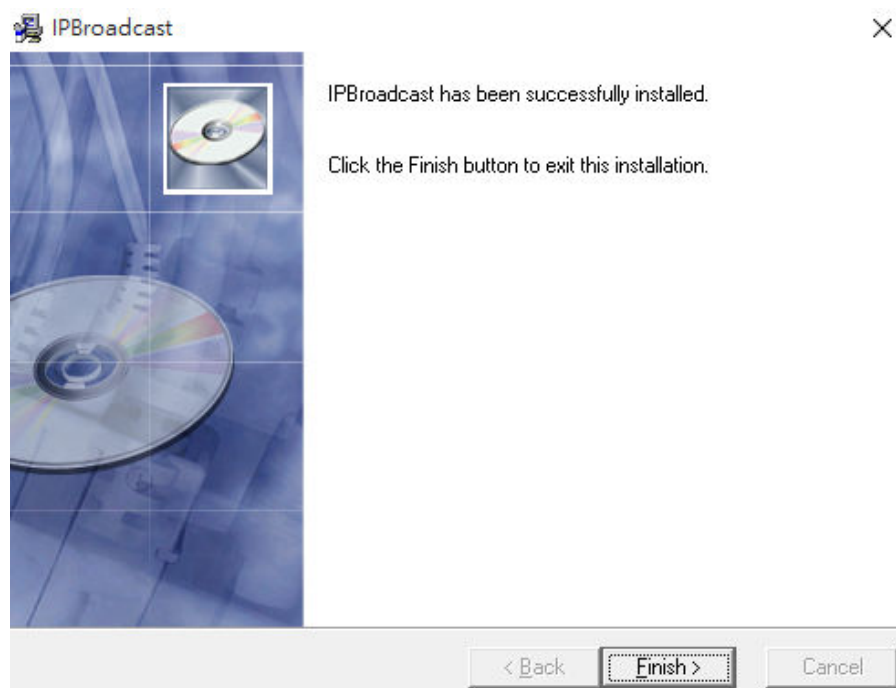
Step 4

Installing, please wait patiently@as shown in the following picture



Step 5

The program is installed, please press [Finish] to finish the installation flow, as shown in the following picture



3. Start/Login System Interface

3.1. Before starting the program, please confirm whether the host's sound card is connected with the microphone device and whether the network is connected correctly, and set the main sound card as the preset device in the operating system

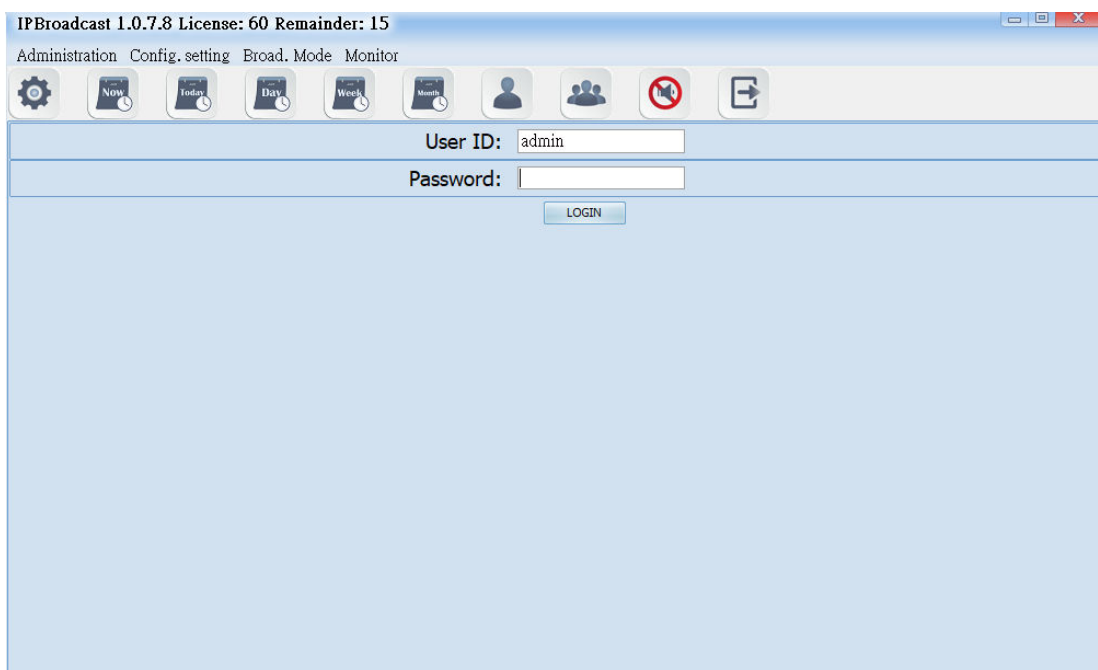
(Attention: since the system framework is Server, please set the host's IP to be fixed virtual IP or real IP, to make the loudspeaker connected to the system)



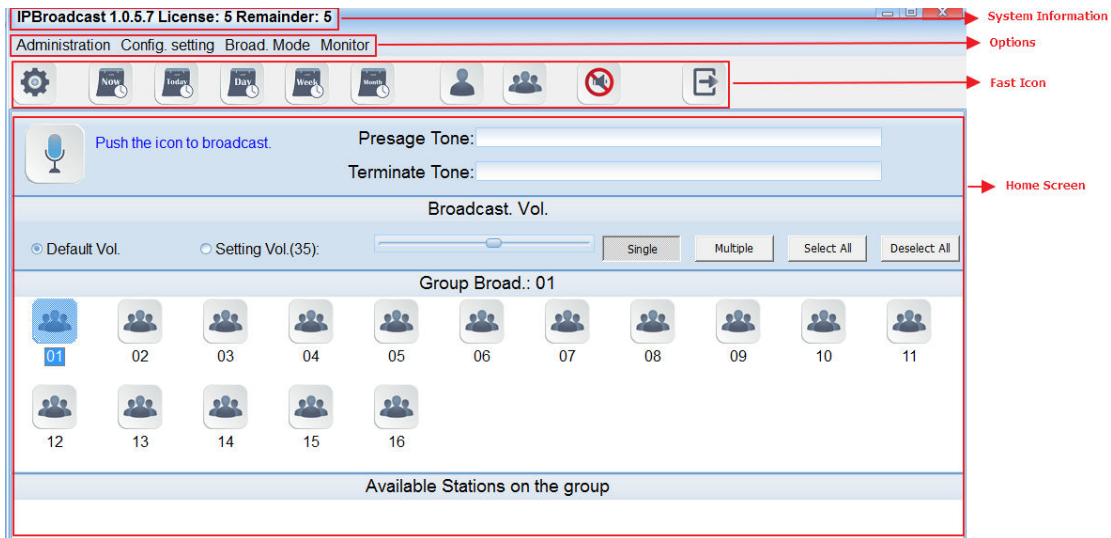
3.2. Execute IPBroadcast.exe

3.3. Input the preset user's name and password: admin/123456 in the following login interface.

User's name is the system's preset admin, thus the user cannot change it.



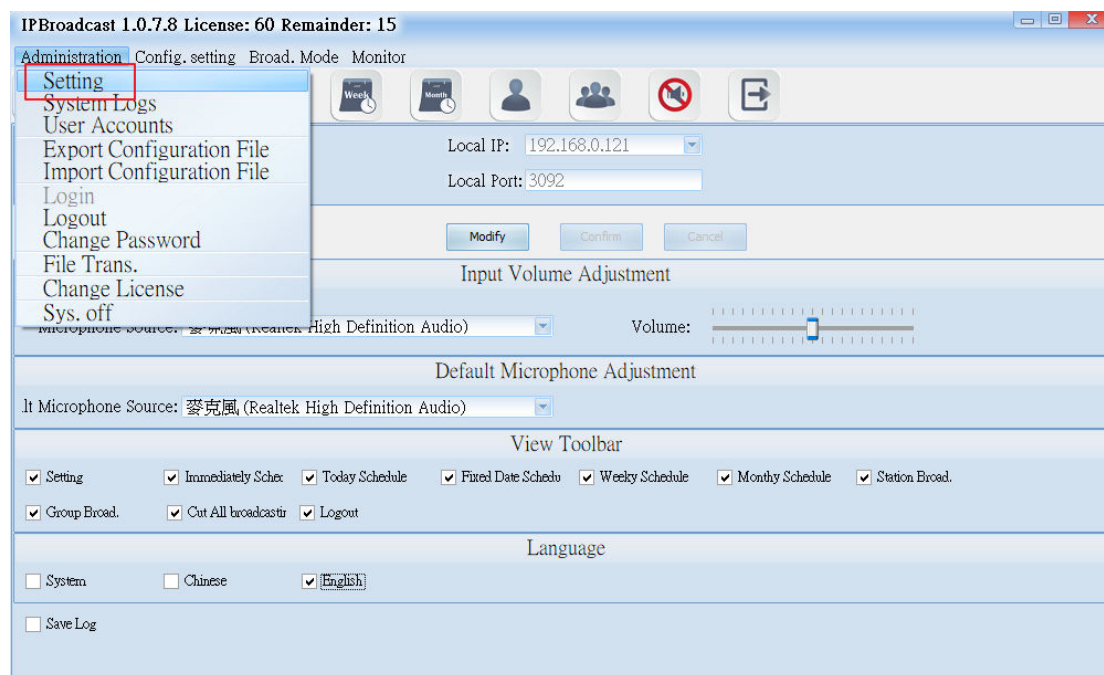
3.4 Specification of program interface



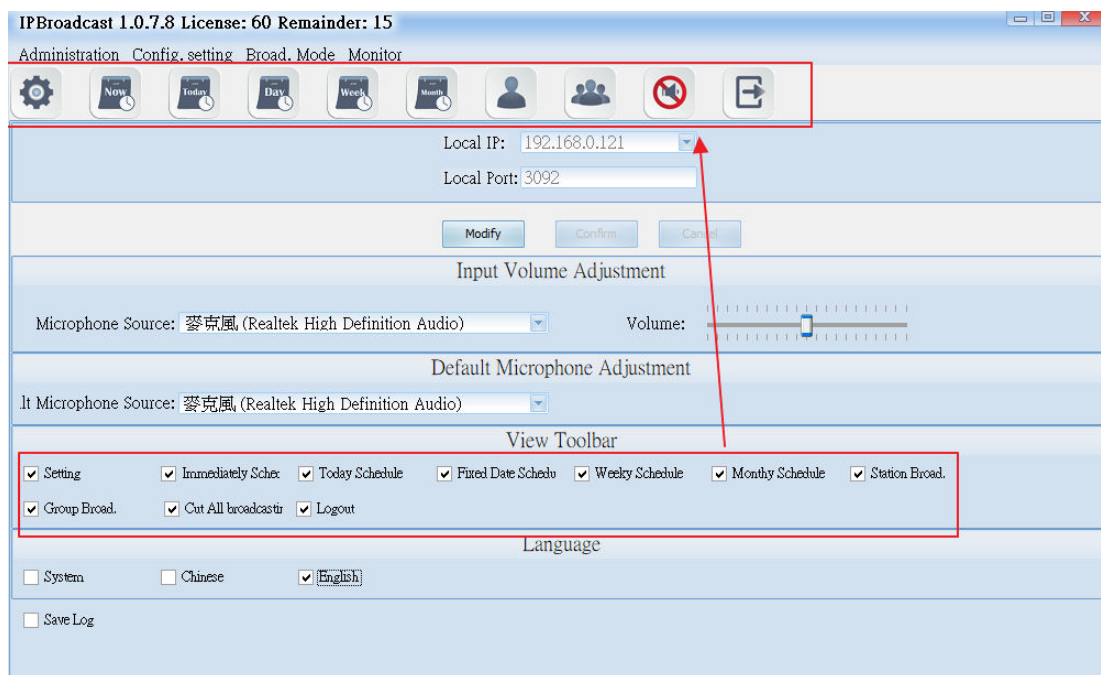
4. System Management

4.1 System Setting

Click [Administration]-->[Setting] to show/change the system's IP Address, communication port and microphone volume adjustment

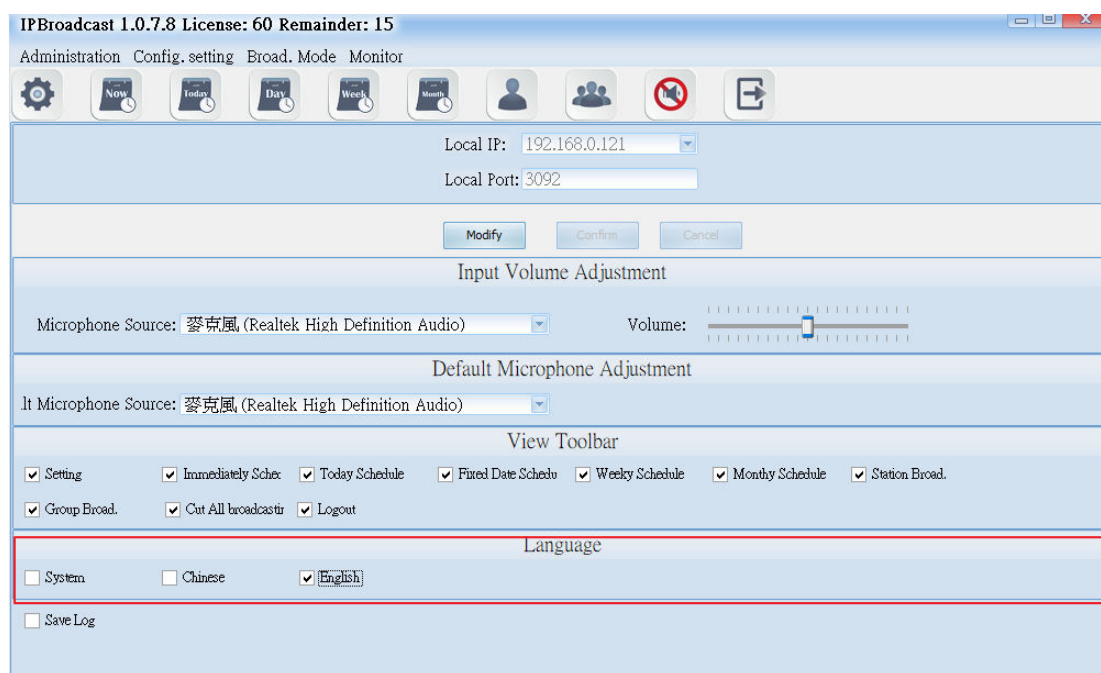


Column	Specification
Local Computer's IP	Show the current system's IP address.
Local Computer's Port	Show the current system's default of the communication port.
Input the volume adjustment	
The Selection of Sound Effect Devices	Select the name of current system's audio card device.
Volume	Adjust the selected audio device for the input volume; the default is 10, the adjustment range is 0~20.
The selection of microphone sound source	
The Selection of Sound Effect Devices	Select the name of audio device of microphone.



Display the Toolbar

Select the function options on the toolbar displayed on the top of the Home Screen



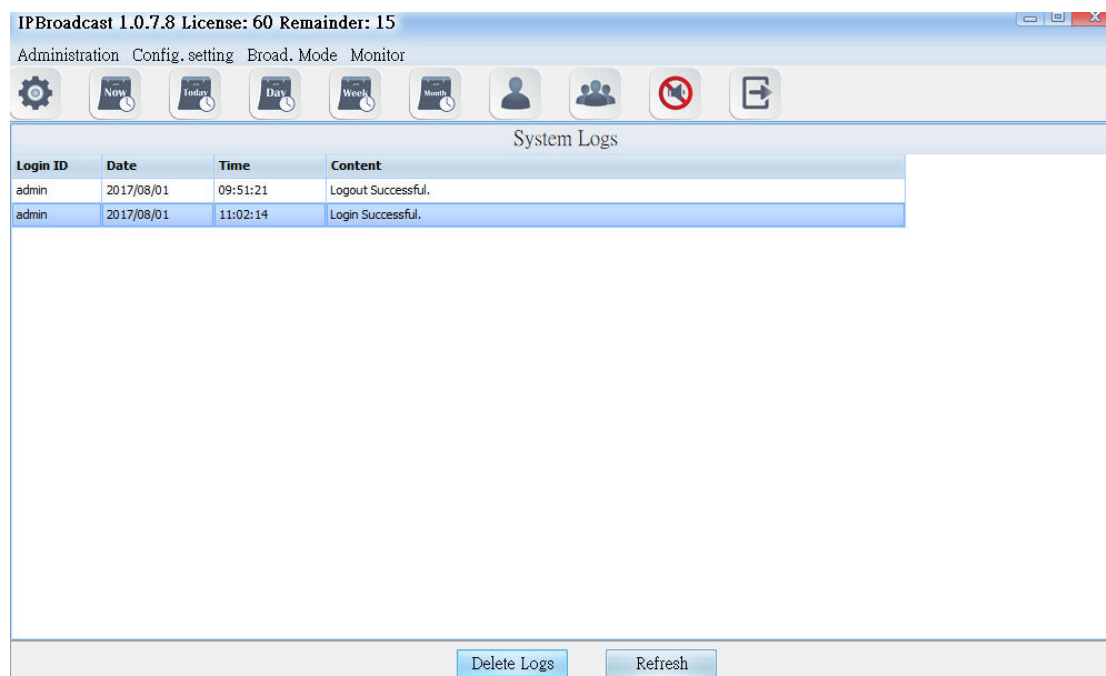
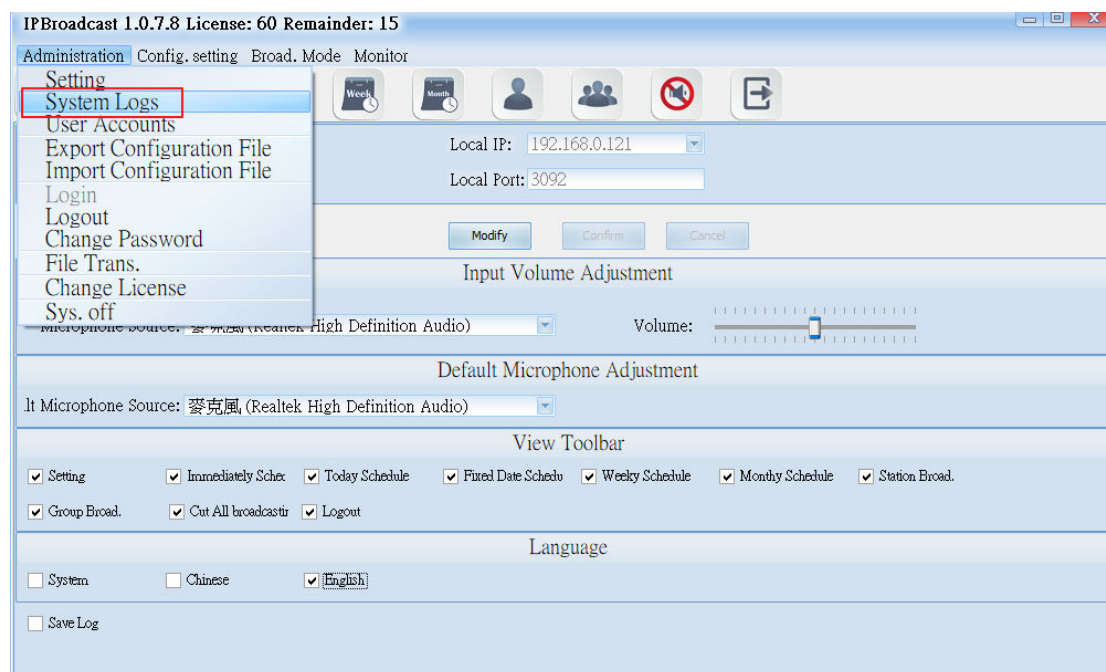
Language Selection

Select the display language of broadcast system. If selecting <System>, it will display the language which operating system originally shows. Currently, it supports only Chinese and English.

***** If you want to change the data in the columns, please press the “modify” in the following pages to modify the data and then press “enter” to save the changes of the setting. *****

4.2 System Logs

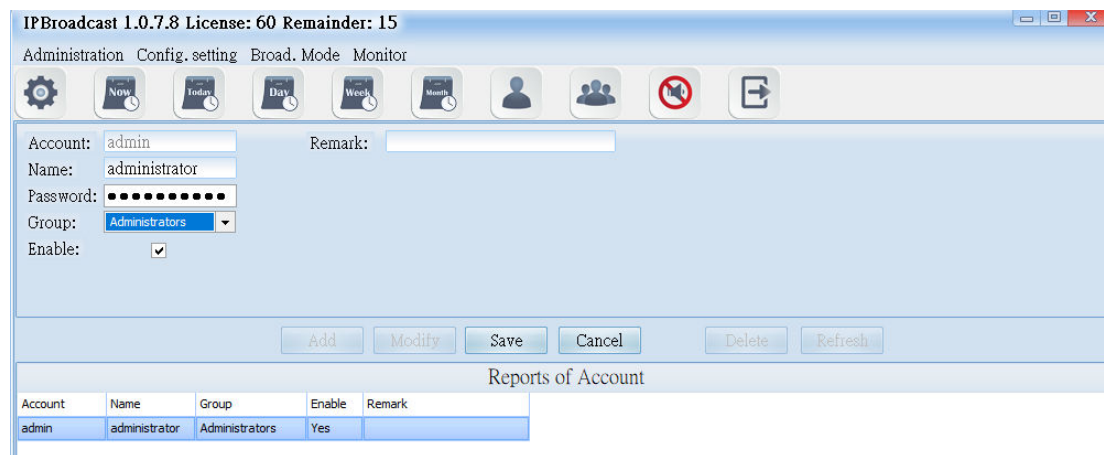
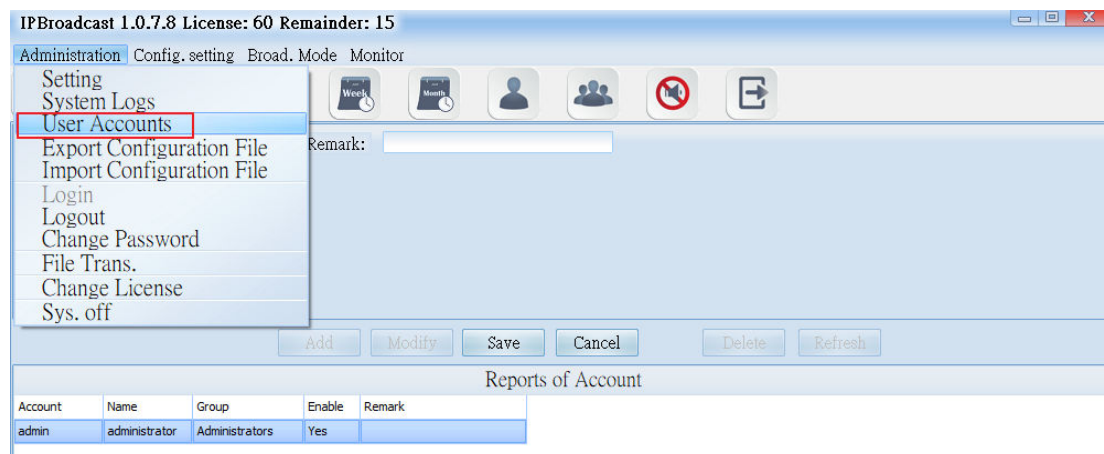
Press the “Administration” and then “System Logs” to display the records, such as login and logout time of all login accounts, the modification of the schedule, execution of the broadcast, etc.



If you want to delete the records, you can click single button or press the “Shift” to select multiple records and then press the “Delete Logs” below the screen to finish the process of deleting logs.

4.3 User Accounts

Click the “Administration” and then “User Account” button to set up or modify the passwords and access permission of all accounts. The levels of access can be divided into Administrator's and User's. Administrator can set up all functions in the system, but the users can only execute single point/group broadcast, and monitor the connection situations of every broadcast point.



Column	Specification
Account	Set the account for accessing system
Name	Set the name of the account
Password	Set the password of the account
Group	Assign the access permission for the accounts, administrators or users
Enable	Select whether the account is enable or not
Remark	Input the remark data

4.4. Export Configuration File

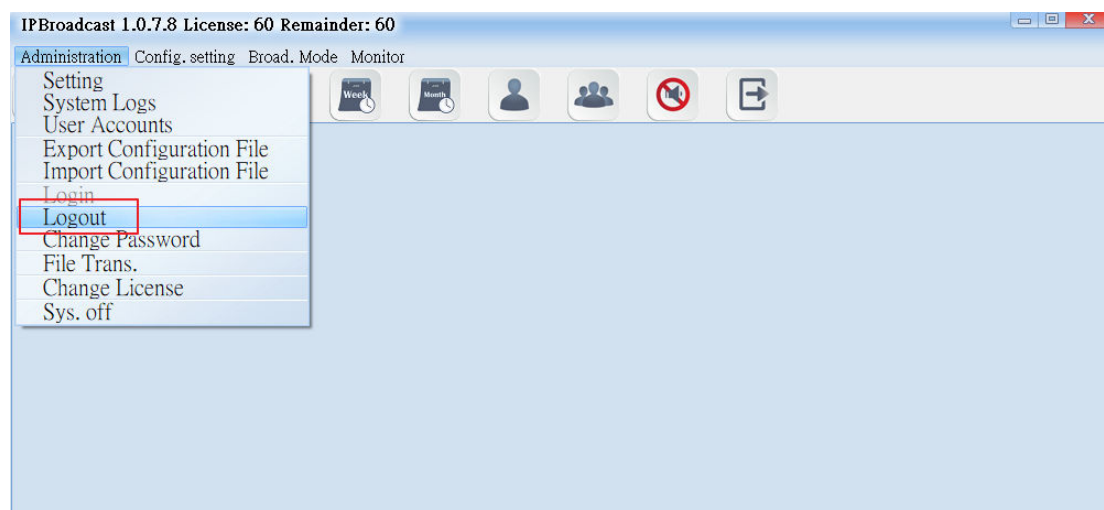
Click the “Administration” and then “Export Configuration File,”you can back up the parameters data preset in the system to the appointed directory. (The directory can produce two files: config. backup and history. backup.) In the future, when there is the need for system rebuilding, you don't need to reset all parameters but just import the previous back up files.

4.5. Import Configuration File

Click the “Administration” and then “Import Configuration File,”and you can restore the original back-up system parameter data by selecting original back-up directory import system.

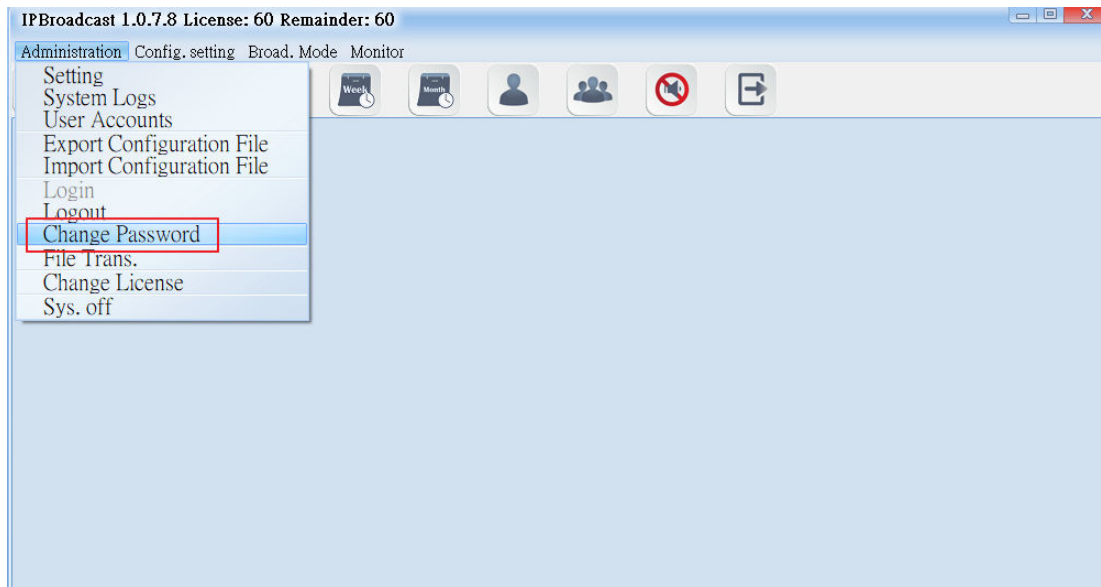
4.6. Logout

Click [Administration]-->[Logout] to log out the system. Except extension broadcast and scheduling broadcast function in the background, other function setting cannot be operated.

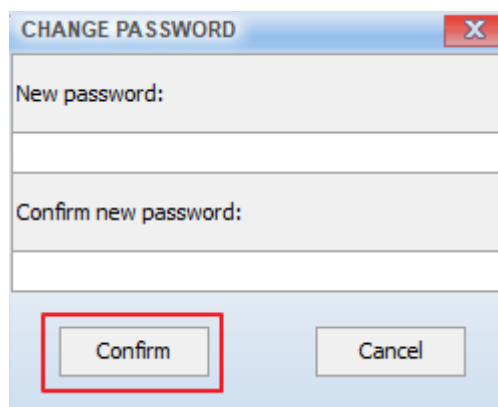


4.7 Change Password

Click [Administration]-->[Change Password] to pop up a password change window, through which can the system login password can be changed

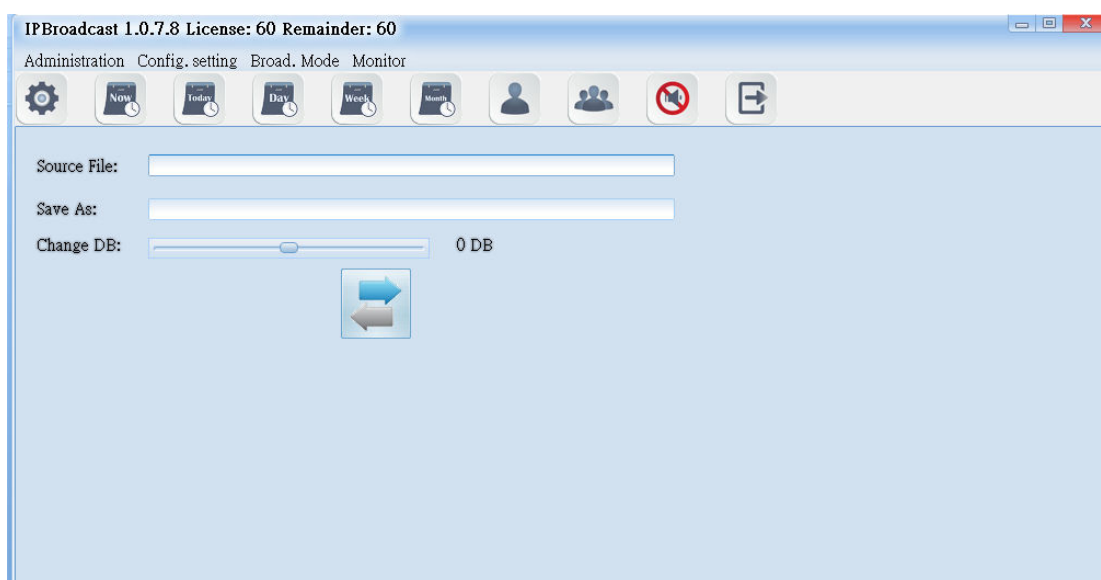
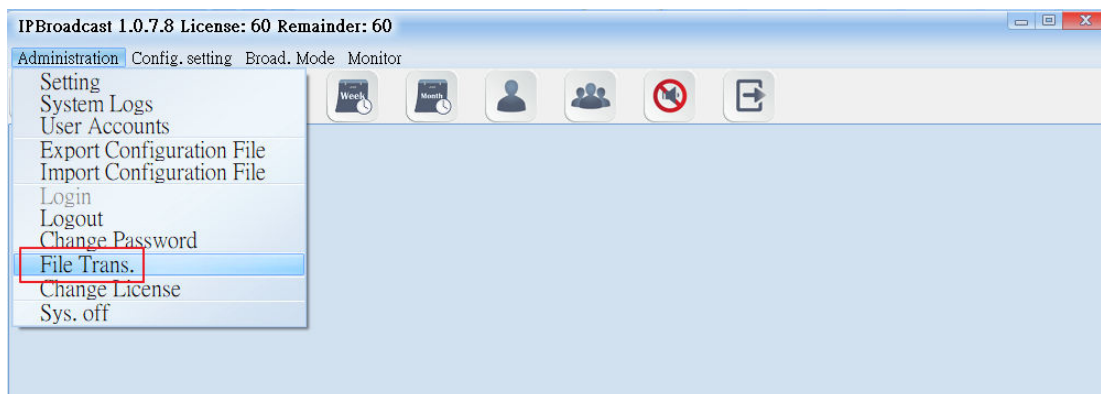


***** Input the new system password in the two columns directly in the following two password modification interfaces, press [Confirm] to execute storage modification setting *****

A screenshot of a 'CHANGE PASSWORD' dialog box. It has a title bar with the text 'CHANGE PASSWORD' and a close button (X). The dialog contains two text input fields: 'New password:' and 'Confirm new password:'. At the bottom, there are two buttons: 'Confirm' (highlighted with a red rectangle) and 'Cancel'.

4.8 Conversion Tool

Click [Administration]-->[File Trans.] to convert the WAVE or MP3 to the which can be played by the system, and be able to adjust DB of the sound

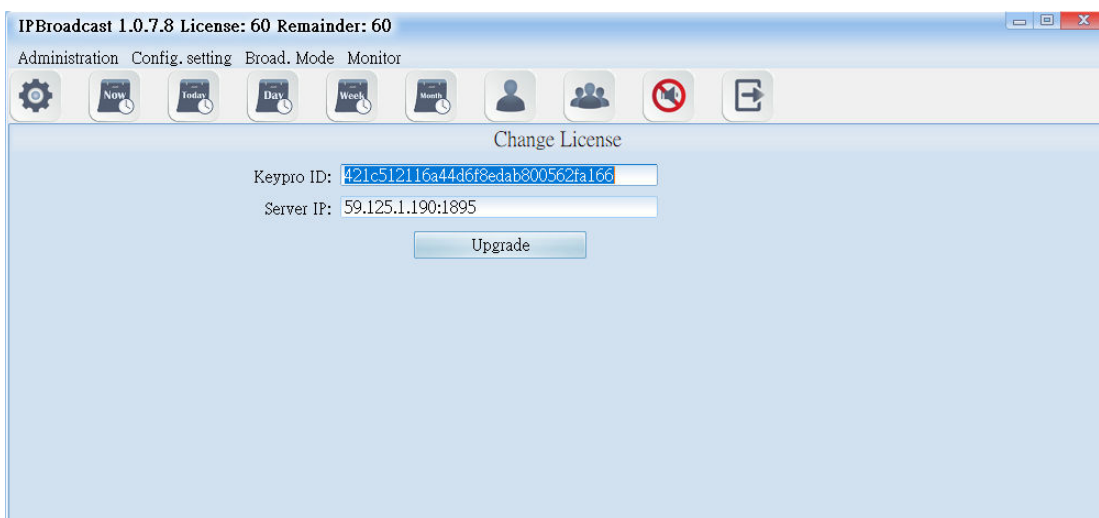
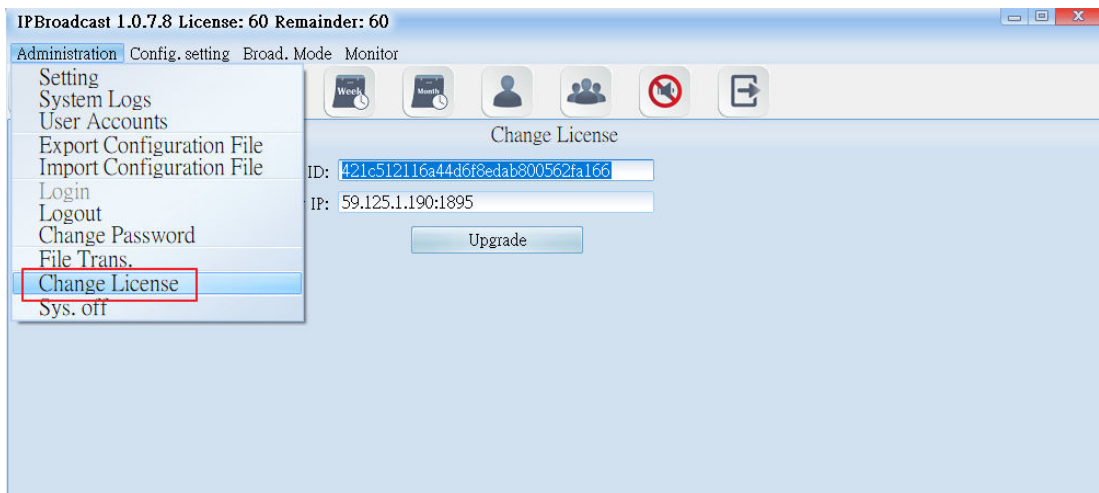


Column	Specification
Source File	Select WAVE or MP3 format sound storage paths to be converted
Save As	Select the transformed WAVE sound storage path
Change DB	Adjust DB of the sound to be converted; the adjustable range of DB is -60DB-60DB

*** After selecting source and purpose sound, press  , to convert sound format ***

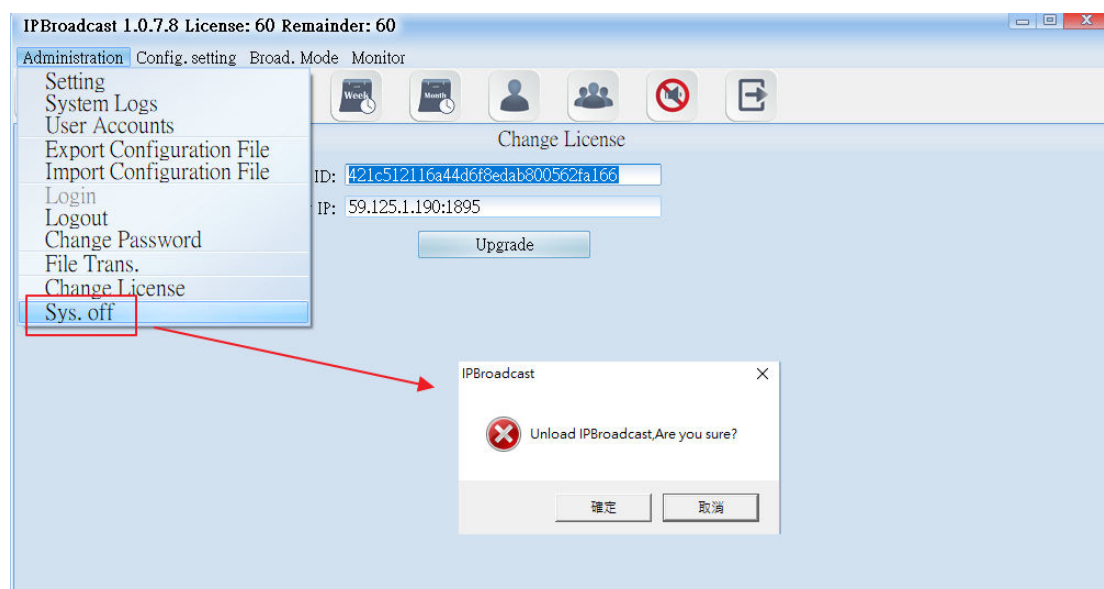
4.9 Modification Authorization

Click [Administration]-->[Change License] to upgrade the authorization number of broadcast points. Please contact the company's business unit about the detailed upgrading method.



4.10 Quit the System

Click [Administration]--> [Sys.off] to pop up a confirmation window of close the program, press [OK] to close the program



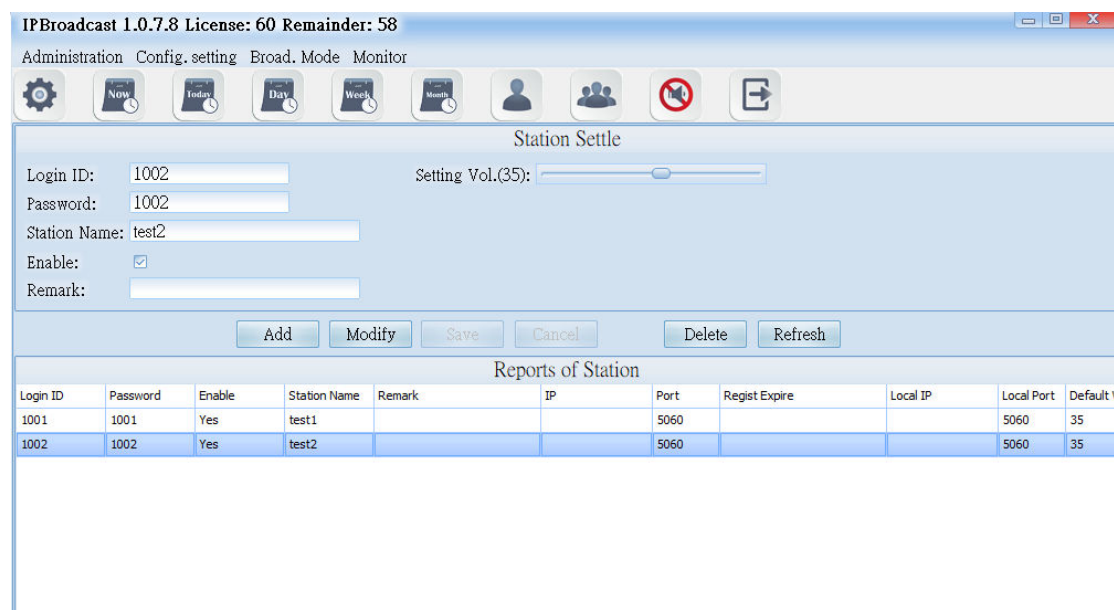
5. Setting Management

5.1. Setting of Broadcast Points

5.1.1 Establishment of broadcast points

Click [Config.setting]-->[Station Set.]

Establish the verification account/password and name of broadcast points in the system, and so on



Column	Specification
Login ID	Establish the registration name of the broadcast point; the data can only be the digit above 3 codes
Password	Establish the registration password of the broadcast point; input digit or word string
Station Name	Input the customized name of broadcast points
Enable	Select whether to start the broadcast point
Remark	Input remark materials
Default Vol.	Define the preset volume of the broadcast point; the setting range is 64-0

5.1.2 Information List of Broadcast Points

The list shows the registration information of the established broadcast points

Column	Specification
Login ID	It shows the registration account of the established broadcast point
Password	It shows the registration password of the established broadcast point
Enable	It shows whether to start the broadcast point
Station Name	It shows the name of the broadcast point input
Remark	It shows the remark materials input
IP	It shows the broadcast point's IP Address
Port	It shows the broadcast point's communication port
Regist Expire	It shows the broadcast point's login period
Local IP	It shows the system's IP Address
Local Port	It shows the system's communication port
Default Vol.	It shows the broadcast point's volume

[Setting range]

Step 1

Establish a group accounts and passwords registered by broadcast points in the broadcast system, and set the name and volume of the broadcast point

IPBroadcast 1.0.7.8 License: 60 Remainder: 58

Administration Config. setting Broad. Mode Monitor

Now Today Day Week Month

Station Settle

Login ID: 1001 Setting Vol.(35):

Password: 1001

Station Name: test1

Enable: ☒

Remark:

Add Modify Save Cancel Delete Refresh

Reports of Station

Login ID	Password	Enable	Station Name	Remark	IP	Port	Regist Expire	Local IP	Local Port	Default V
1001	1001	Yes	test1			5060			5060	35
1002	1002	Yes	test2			5060			5060	35

Step 2

Log in IP Speaker WEB interface, click [SIP Settings]-->[Service Domain] fill the broadcast point account, password, the broadcast system's host IP and port number in corresponding columns of the program of the broadcast system

← → ↻ 🏠 | http://192.168.0.100/

PORTech
Your CTI Partner

Service Domain Settings

Active: ☒ ON ☐ OFF

Register Name: 1001

Register Password: 1001

IPB Server: 192.168.0.77:3092

Status: Registered

Submit Reset

Network

SIP Settings

Service Domain

Port Setting

Codec Setting

Audio Setting

Other Settings

Update

System Authority

Save Change

Reboot

Step 3

Press [Submit]-->[Save Change] until IP Speaker restarts, to register the broadcast system program.

Users can also check the online state of the broadcast point in the broadcast System

← → ↻ 🏠 | http://192.168.0.100/

PORTech
Your CTI Partner

SIP Settings

- Service Domain
- Port Setting
- Codec Setting
- Audio Setting
- Other Settings

Update

- System Authority
- Save Change**
- Reboot

Service Domain Settings

Active:	<input checked="" type="radio"/> ON <input type="radio"/> OFF
Register Name:	1001
Register Password:	1001
IPB Server:	192.168.0.77:3092
Status:	Registered

Submit **Reset**

5.2. Group Name

Click [Config.setting]-->[Group Naming]

The system has arranged 16 broadcast groups in advance, thus users can define the name of each broadcast group independently

***** In the following group name page, input the group name in each column according to group code, and then press enter *****

Group Broad.	Group Name
01	test group
02	
03	
04	
05	
06	
07	
08	
09	
10	
11	
12	
13	
14	
15	
16	

5.3. Group Setting

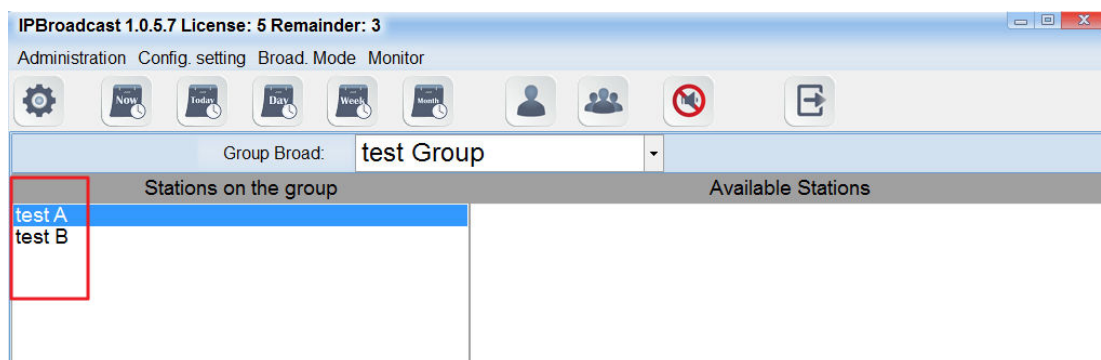
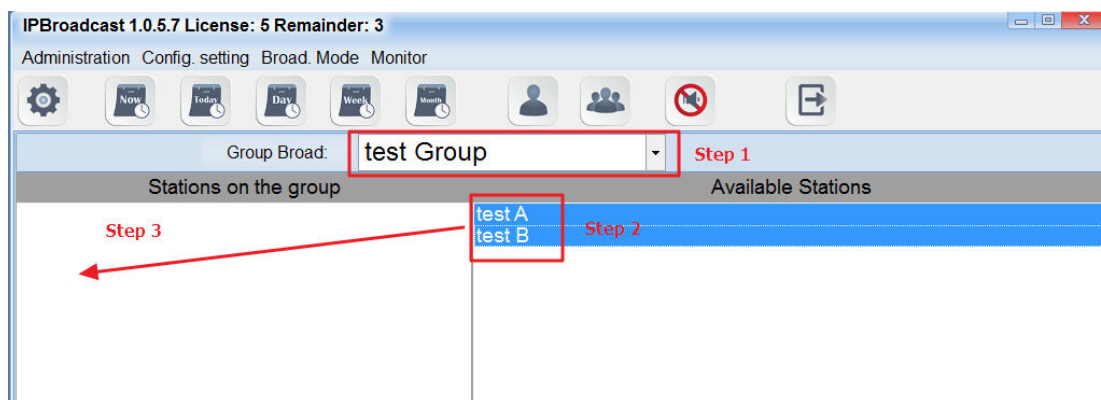
Click [Config.setting]-->[Group Set.]

Steps of editing groups:

Step 1. Select the broadcast group name to be set

Step 2. Select the broadcast group names to be added into the group in the column of broadcast points

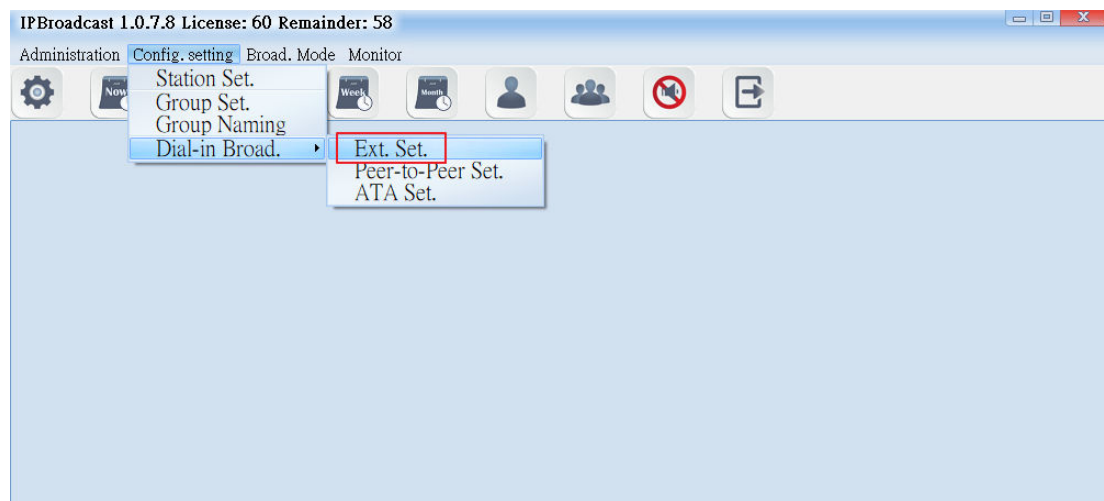
Step 3. Select a single or press shift on the keyboard to select multiple broadcast point names, and then press the left key of the mouse and move it to the column of group broadcast points to finish the setting of adding groups to the broadcast points. On the contrary, to delete the existing broadcast points in the group, select them from the group broadcast point column and press the left key of the mouse, and move it to the column of group broadcast points to finish the setting of deleting broadcast points in the group



5.4. Extension Broadcast Setting

Select [Config.setting]-->[Ext.Set.]

The system can become an extension number of IP IBX through the method for registering IP IBX. Through dialing the extension number from other extensions and via IVR voice interaction, single point or group broadcast function can be executed



5.4.1 Display column of registration state

Unregister	
Regist.PBX Information	
Regist. PBX: <input type="checkbox"/>	Regist. Expire (sec.): 300
PBX IP: <input type="text"/>	Ext. User ID: <input type="text"/>
PBX Port: 5060	Ext. Password: <input type="text"/>

5.4.2 Login PBX data

Regist.PBX Information	
Regist. PBX: <input type="checkbox"/>	Regist. Expire (sec.): 300
PBX IP: <input type="text"/>	Ext. User ID: <input type="text"/>
PBX Port: 5060	Ext. Password: <input type="text"/>

Column	Specification
Regist.PBX	Select whether to register IP PBX
PBX IP	Set IP address of IP IBX to enter
PBX Port	Set communication port of IP IBX to enter; setting is 5060
Regist.Expire	Period of system registration IP PBX; setting is 300s
Ext.UserID	Set the extension number of IP IBX to enter
Ext.Password	Set the extension number of IP IBX to enter

5.4.3 Access IVR data

IVR Information	
Password Req.: <input type="checkbox"/>	
Password: <input type="text"/>	
Presage Tone: <input type="text"/>	
Terminate Tone: <input type="text"/>	

Column	Specification
Password Req	Select whether the extension broadcast function requires password verification flow
Password	Input the password of the verification flow; the password can only be digits
Presage Tone	Select the path storing the prelude sound and file name; the words of the folder names of the sound file and storage path shall have no space, the sound file format is MP3 or WAV
Terminate Tone	Select the path and file name of ending sound file storage: the words of the folder names of the sound file

5.4.4 Broadcast point volume

Broadcast. Vol.

☒ Default Vol.
 ☐ Setting Vol.(35):

Column	Specification
Default Vol.	Select the preset volume in establishing the broadcast point
Setting Vol	Select to use the appointed volume: setting range is 64-0

***** To change the column data, please press[Modify] to change the data, and then press [Confirm] to execute storage change setting *****

IPBroadcast 1.0.5.7 License: 5 Remainder: 3

Administration
Config. setting
Broad. Mode
Monitor

Unregister

Regist.PBX Information

Regist. PBX: ☐
 PBX IP:
 PBX Port: 5060

Regist. Expire (sec.): 300
 Ext. User ID:
 Ext. Password:

IVR Information

Password Req.: ☐
 Password:
 Presage Tone:
 Terminate Tone:

Broadcast. Vol.

☒ Default Vol.
 ☐ Setting Vol.(35):

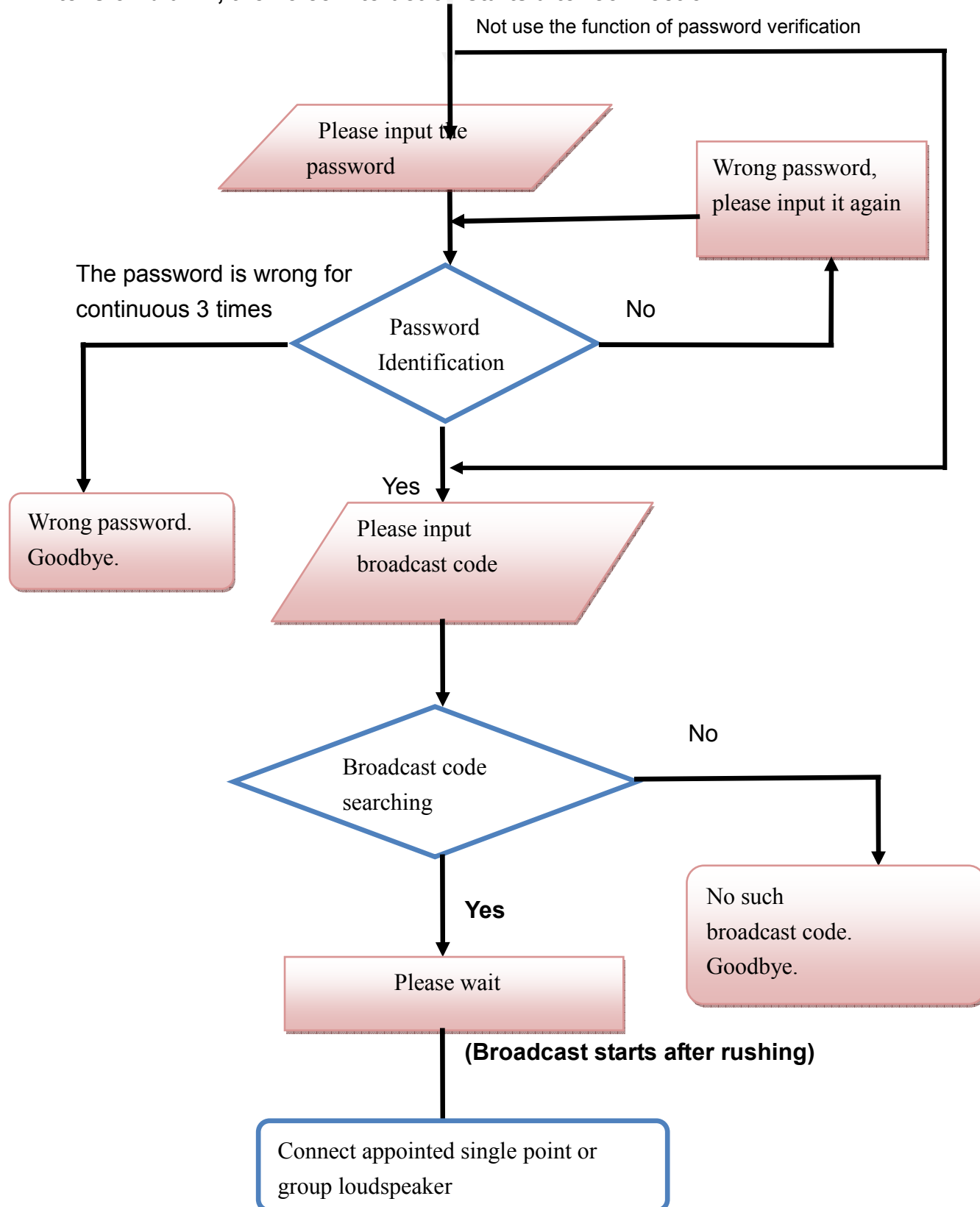
Modify

Confirm

Cancel

5.4.5 IVR voice interaction flow chart

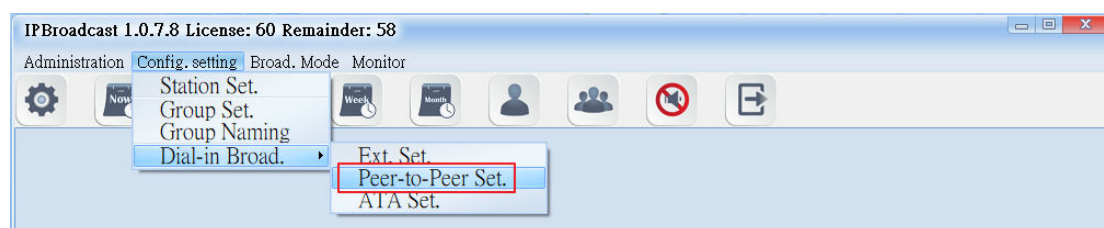
Extension dial-in, the voice interaction starts after connection



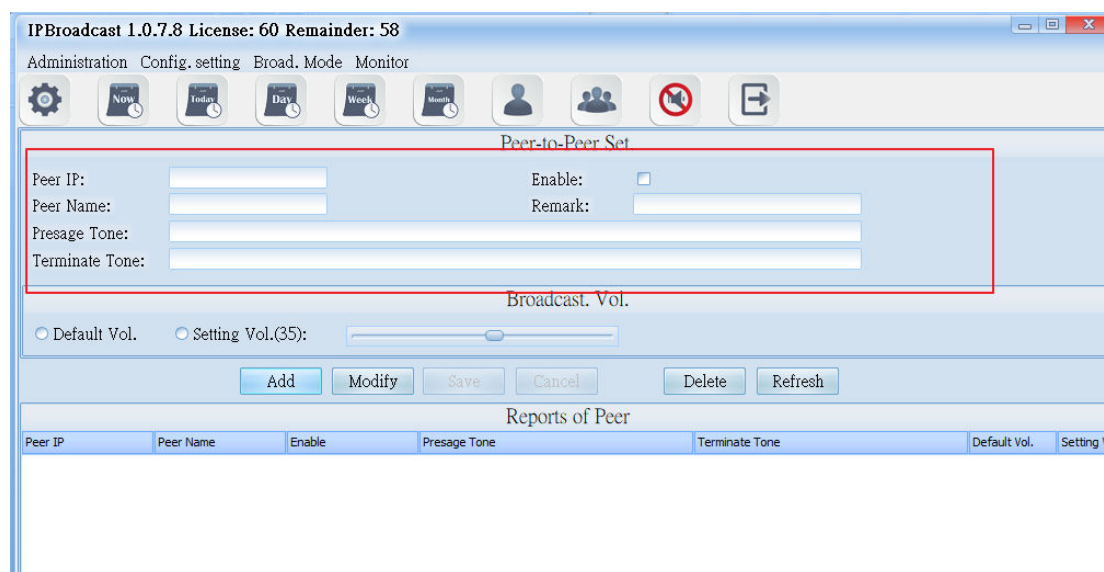
a. Select “Configuration Setting”--> “Dial-in Broadcast”--> “Peer- to- Peer Setting,”and broadcast initiators can use the IP transmission to dial in the broadcast system. After the system verifies the source of IP, it will be extended to assigned single broadcast point or group.

Example:

Set the SIP trunk through the IP switchboard and send the assigned speaker codes and broadcast system IP to broadcast system. After the system verifies the IP, the speaker can get connected. The broadcast initiators can begin to broadcast after hearing the beep.



b. Setting Specification



Column	Specification
Peer IP	Set the dial-in IP Address for system's verifying.
Peer Name	Set the name of the dial-in side.
Presage Tone	Select the names of storage paths and files of the presage tone; the sound format is MP3or WAV.
Terminate Tone	Select the names of storage paths and files of the terminate tone; sound format is MP3or WAV.
Enable	Select whether the schedule is enable or not; the default is enable.
Remark	Input the remark data.

Column	Specification
Default Volume	Select the default volume when the broadcast point is established
Setting Volumn	Select the setting volume; the setting range is from 64~0

c.ATA Setting

(1) Select “Dial-in Broadcast” → “ATA Setting”

Through the method of registration, the broadcast initiators can be transmitted to the assigned single broadcast point or group after the system verify the accounts and passwords.

Example1:

Through the IP switchboard to set IP exterior line and to register the broadcast system, you can catch the assigned exterior dial-in single speaker codes or group codes to connect the speakers by any extensions under the switchboard. The initiators can begin to broadcast after hearing the beep.

Example 2:

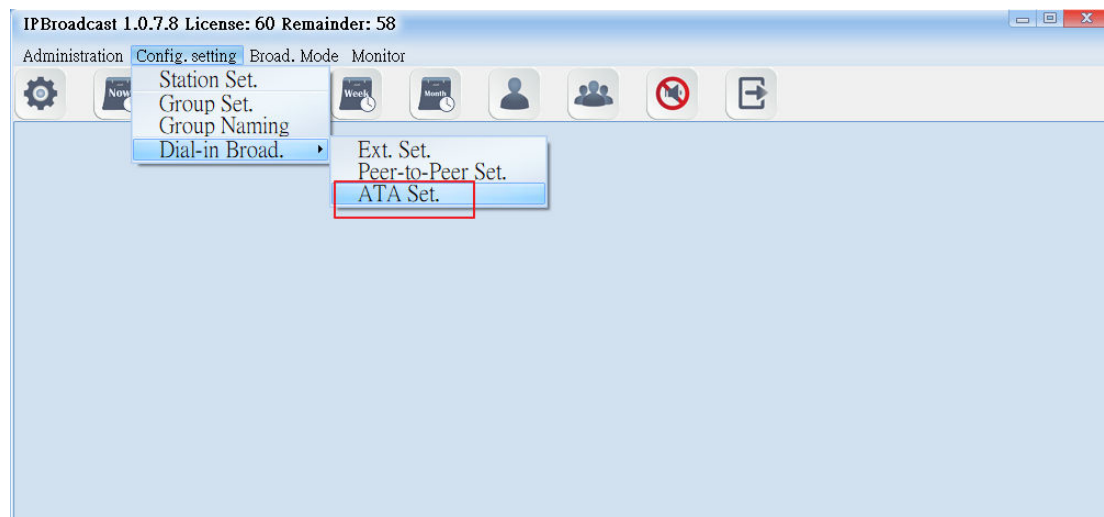
Use one IP phone to register the broadcast system. After registering, you can take the phone directly and dial single speaker codes or group codes to connect the speaker. The initiators can begin to broadcast after hearing the beep.

Example 3:

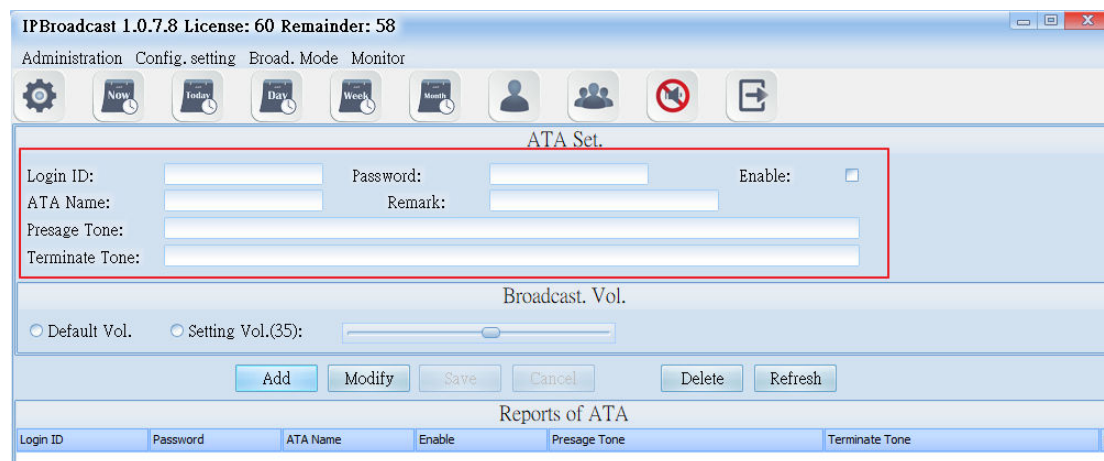
Use one ATA gateway to register the broadcast system and then connect to the traditional phone. Later, you can take the phone directly and dial single speaker codes or group codes to connect the speaker. The initiators can begin to broadcast after hearing the beep.

Example 4:

Use one ATA gateway to register the broadcast system and connect to the FXO which is assigned by the traditional switchboard. You can catch assigned exterior dial-in single speaker codes or group codes to connect the speakers by any extensions under the switchboard. The initiators can begin to broadcast after hearing the beep.

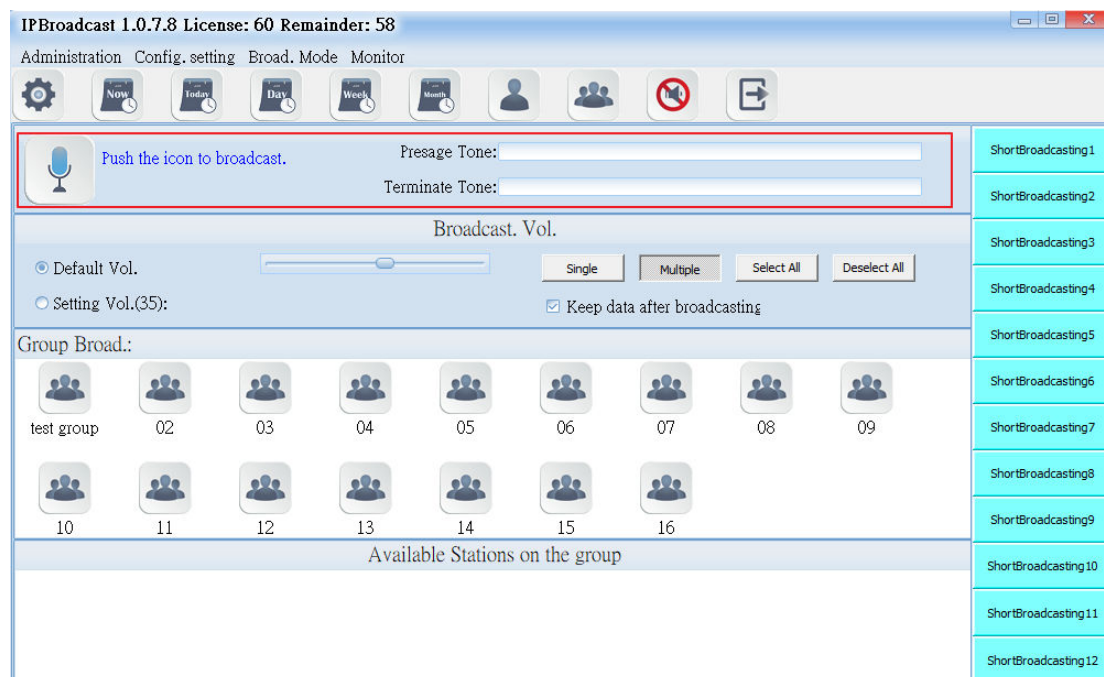





(2).Setting Specification



Column	Specification
Login ID	Set the accounts for the IP phone or ATA gateway to verify the login.
Password	Set the passwords for the IP phone or ATA gateway to verify the login.
ATA Name	Set the dial-in name.
Presage Tone	Select the names of storage paths and files of the presage tone; the sound format is MP3or WAV.
Terminate Tone	Select the names of storage paths and files of the terminate tone; sound format is MP3or WAV.
Enable	select whether to enable this schedule; it is enabled by default
Remark	input remarks

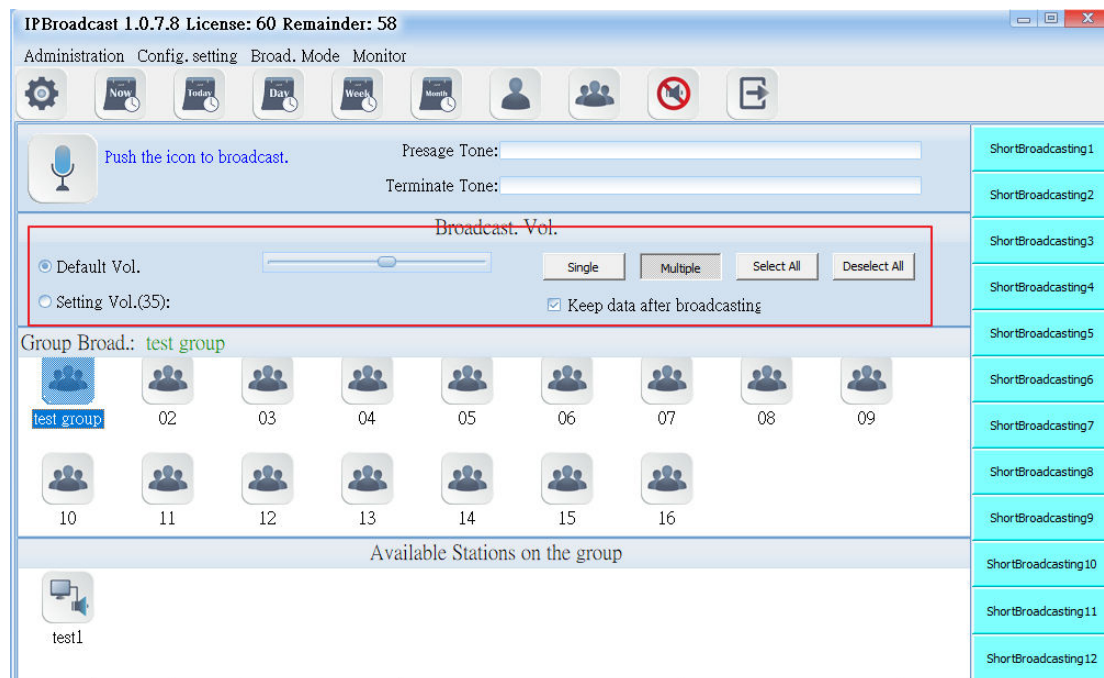
6.1.1 Broadcast startup diagram and sound file setting



	Group broadcast startup diagram
	Broadcast point connecting diagram
	Diagram of being able to start broadcast
Presage Tone	Select the path storing the prelude sound and file name; the words of the folder names of the sound file and storage path shall have no space, the sound file format is MP3 or WAV
Terminate Tone	Select the path and file name of ending sound file storage; the words of the folder names of the sound file and storage path shall have no space, the sound file format is MP3 or WAV

6.1.2 Broadcast Point Volume

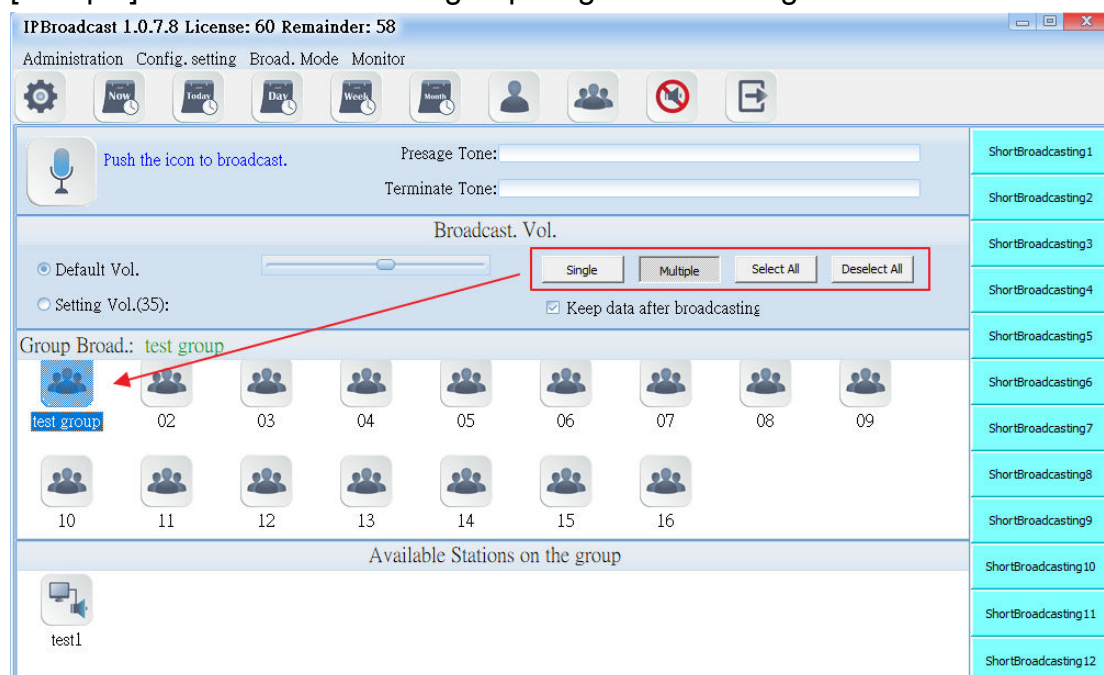
Set the broadcast point volume of group broadcast to be preset volume or the user's appointed volume (setting range is 64~0)



Column	Specification
Default Vol.	Select the preset volume when the user's broadcast point is established
Setting Vol.	Select the user's appointed volume; the setting range is 64-0

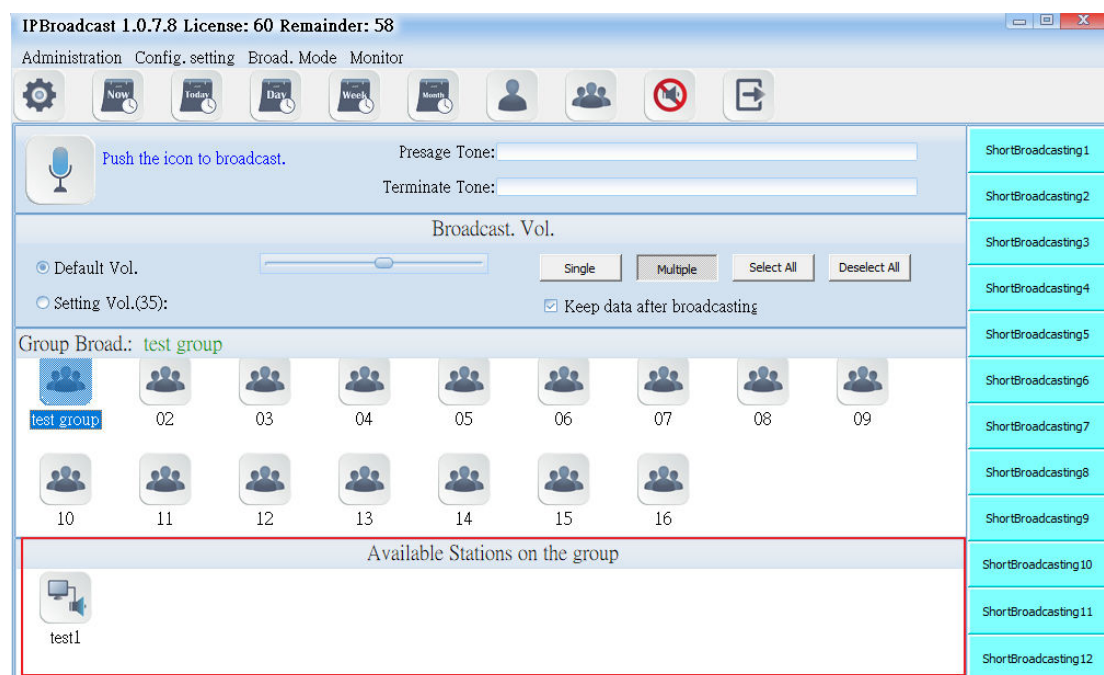
6.1.3 Broadcast Group

The system has arranged 16 groups in advance. Users can press [Single] or [Multiple] to select the needed group diagram according to the mode



6.1.4 Broadcast Point Available for Group

It shows that the selected group bottom has registered online broadcast point names at present. The broadcast points not registered are not shown







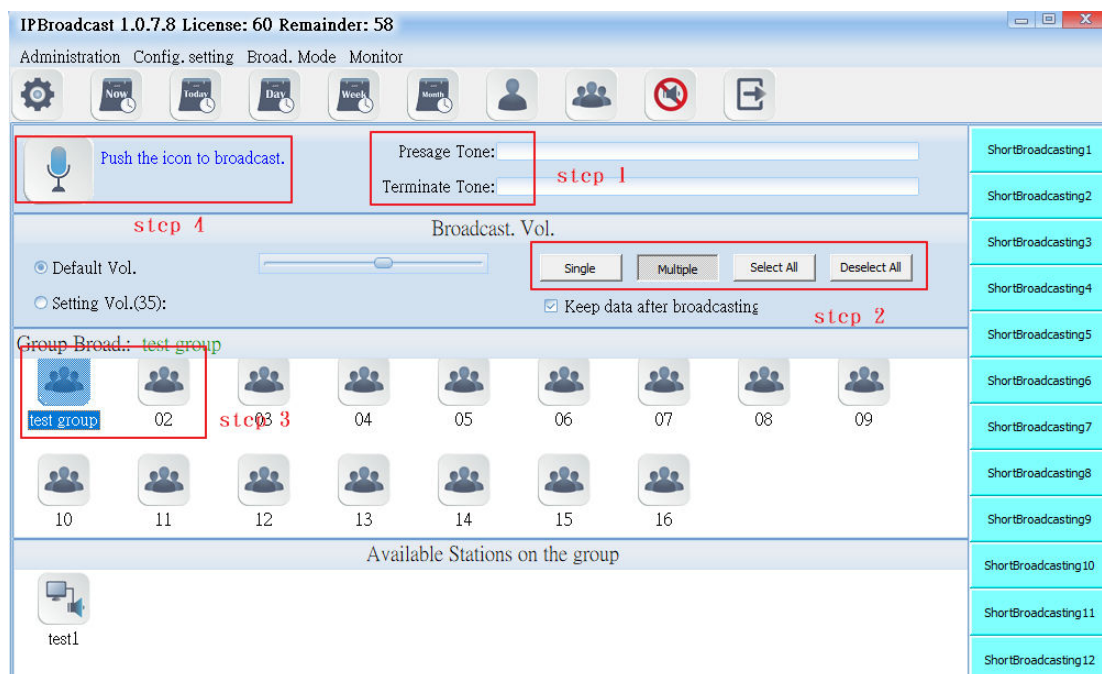
Using steps of group broadcast

Step 1. Set the path of prelude sound file or ending sound file and volume of the broadcast point

Step 2. Press [Single] or [Multiple]

Step 3. Select the required group according to the selected mode

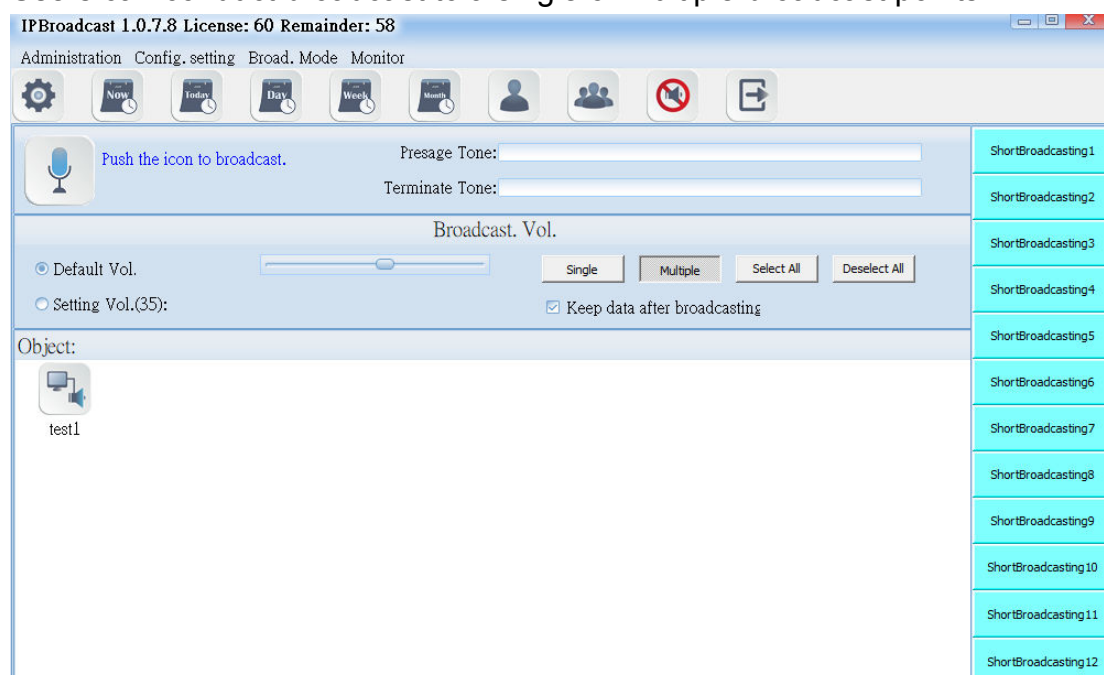
Step 4. Press  to start group broadcast, wait until  occurs, start broadcast (if the sound card of PC is connected with a loudspeaker, it will have rushing sound synchronously when  occurs); repress  to end broadcast



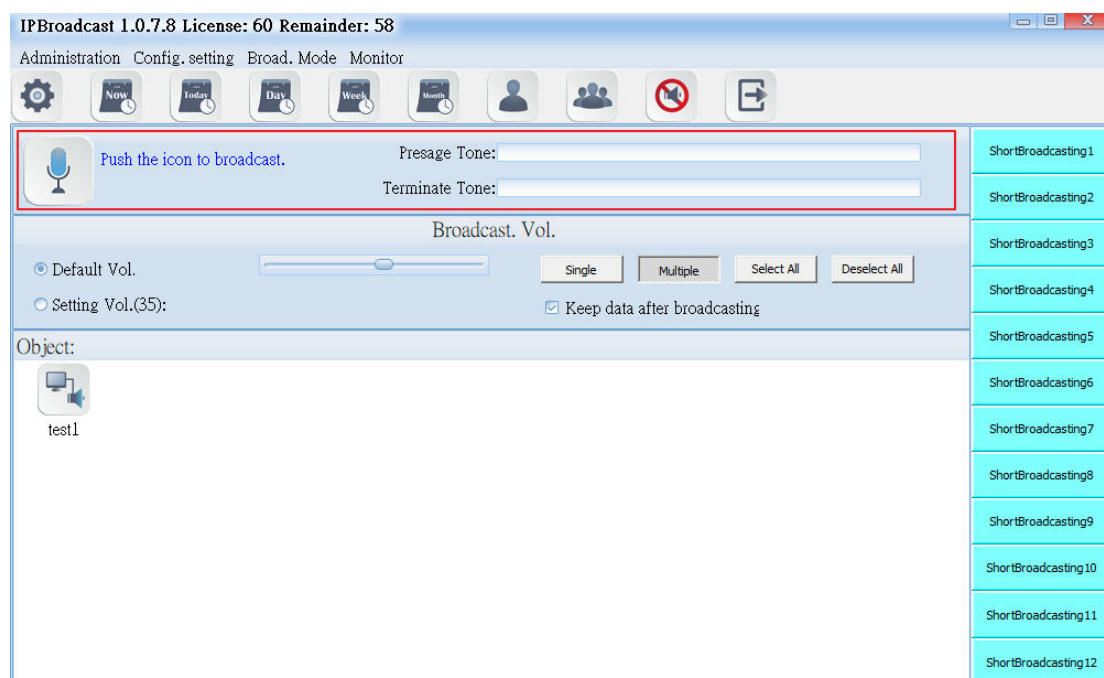
6.2. Single Point Broadcast




Select [Broad.Mode]-->[Station Broad.]

Users can conduct broadcast to a single or multiple broadcast points



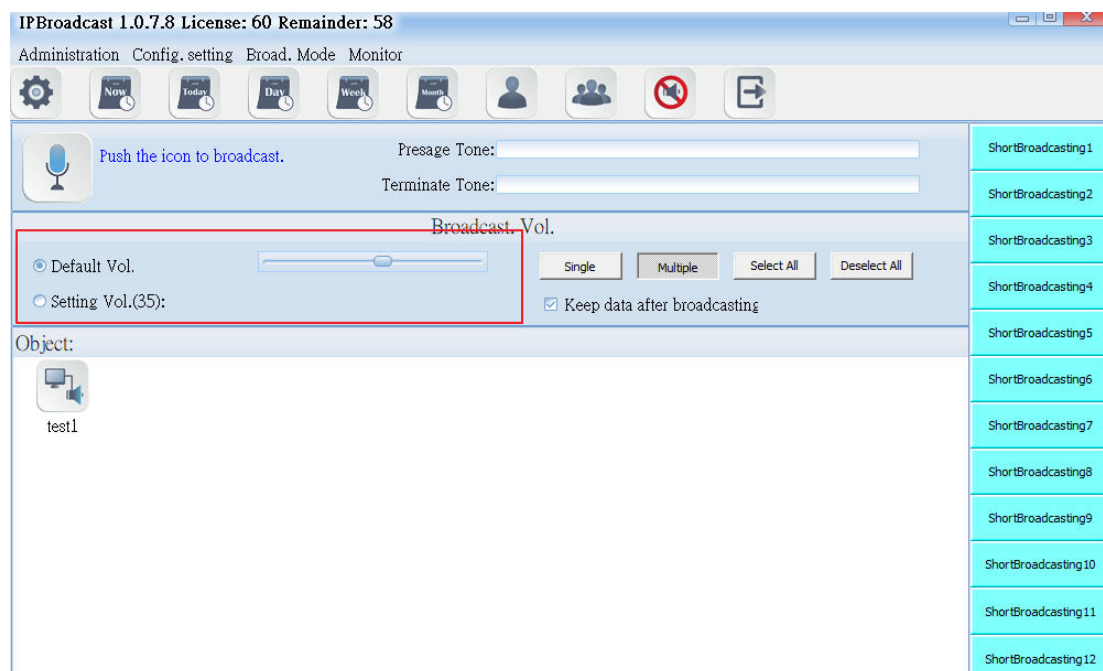
6.2.1 Broadcast Startup Diagram and Sound File Setting



	Startup key diagram of single point broadcast
	Connecting diagram of broadcast point
	The diagram of being able to start the broadcast point
Presage Tone	Select the path storing the prelude sound and file name; the words of the folder names of the sound file and storage path shall have no space, the sound file format is MP3 or WAV
Terminate Tone	Select the path and file name of ending sound file storage; the words of the folder names of the sound file and storage path shall have no space, the sound file format is MP3 or WAV

6.2.2 Broadcast Point Volume

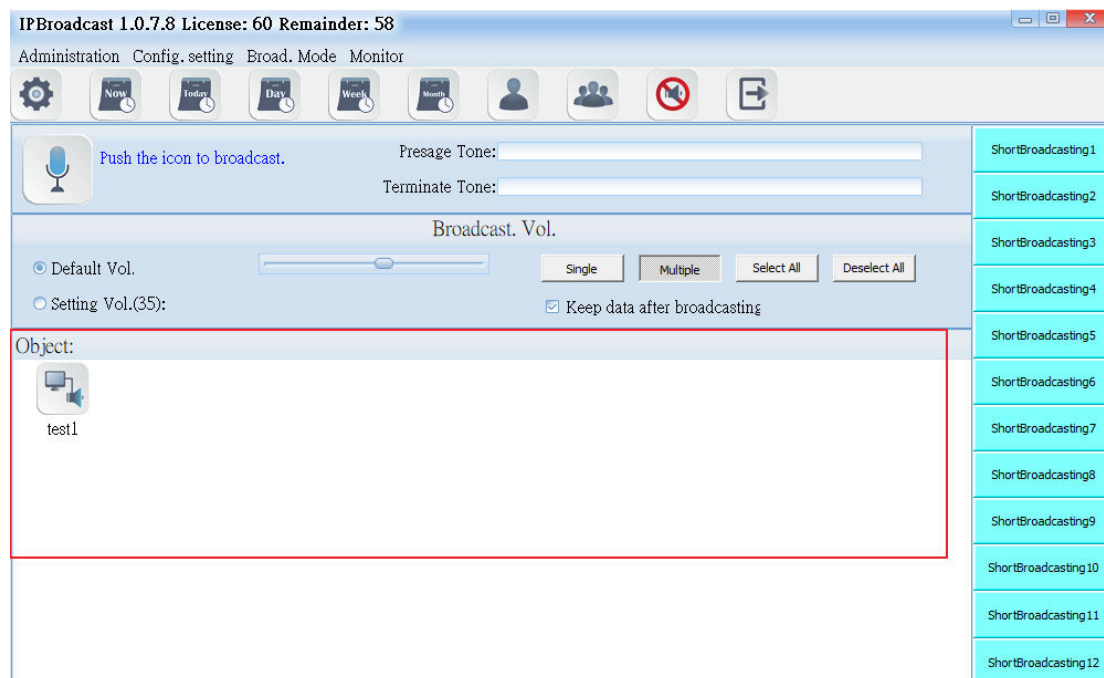
Set the single point broadcast volume to be preset volume or the user's appointed volume (setting range is 64-0)



Column	Specification
Default Vol.	Select the preset volume when the broadcast point is established
Setting Vol.	Select to use the appointed volume; setting range is 64-0

6.2.3 Broadcast Object

It shows that the selected group bottom has registered online broadcast point names at present. The broadcast points not registered are not shown







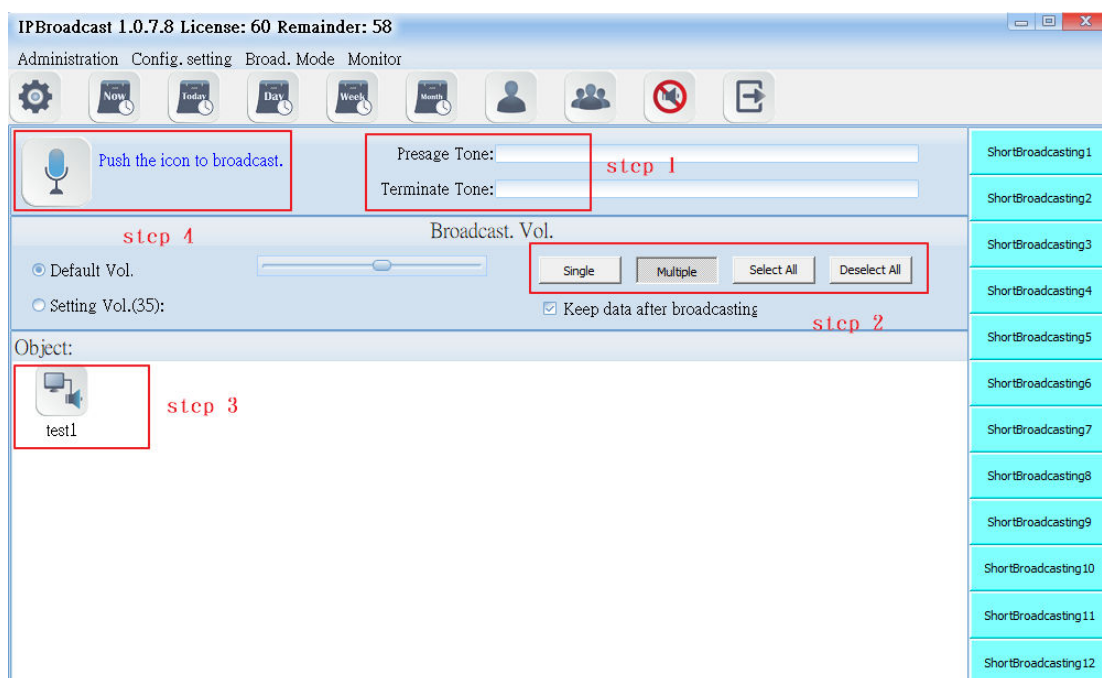
Using steps of a single point broadcast

Step 1. Set the path of prelude sound file or ending sound file and volume of the broadcast point

Step 2. Press [Single] or [Multiple]

Step 3. Select the required broadcast point according to the selected mode

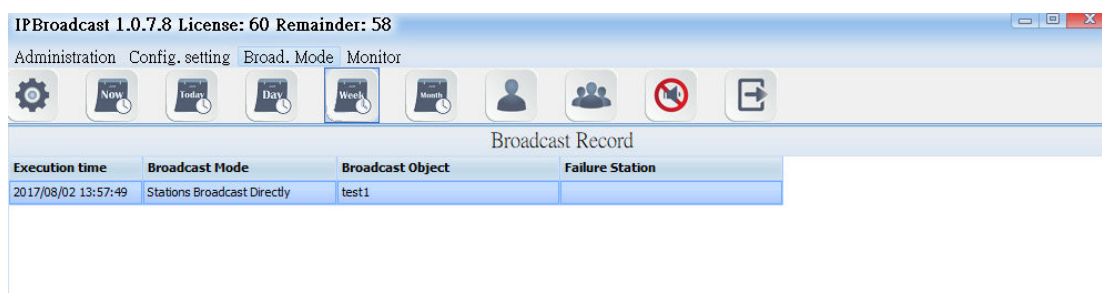
Step 4. Press  to start group broadcast, wait until  occurs, start broadcast (if the sound card of PC is connected with a loudspeaker, it will have rushing sound synchronously when  occurs); repress  to end broadcast



6.3. Broadcast Record

Click “Broadcast Mode”--> “Broadcast Record”

Broadcast system will record the broadcast process, including the broadcast time, broadcast mode, broadcast object, and failure stations. The failure station is the failed connection of the broadcast point in the system.



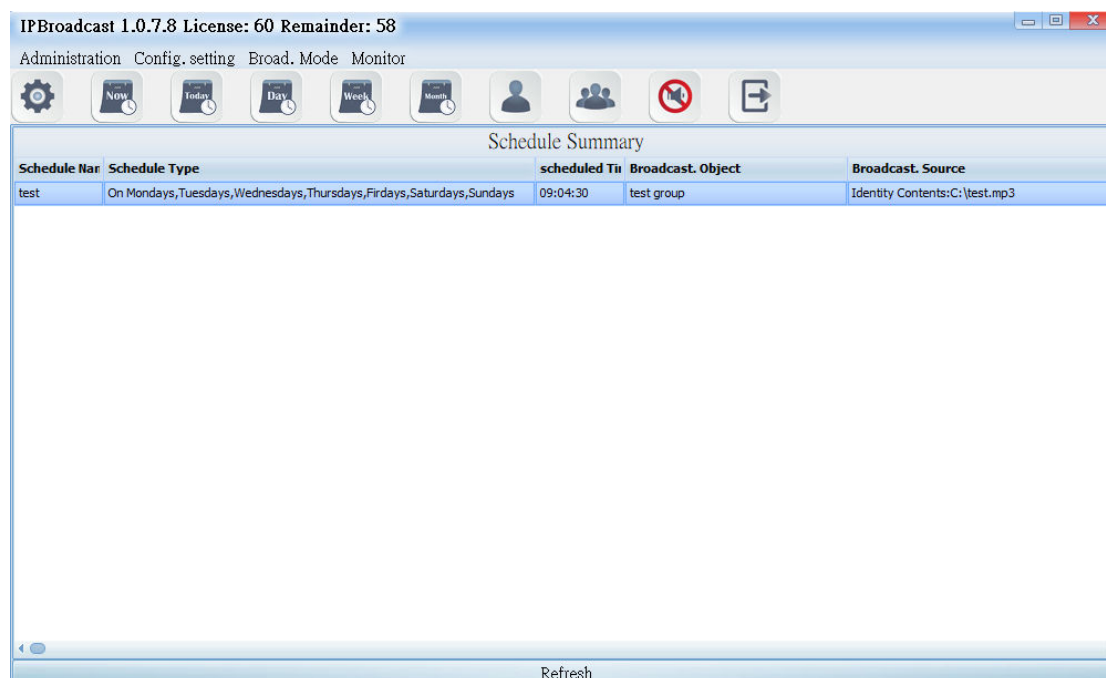
If you want to delete the records, you can click single button or press down the “Shift” button to select multiple records and then press the “Delete Logs” button below the screen to finish the process of deleting logs.

If you want to export the record to the files, press the “export record” button below the screen and select the place where to store the files. After finishing the action of exporting files, which has the filename extension. CSV, you can open them in the normal text files.

6.4. Schedule Broadcast

Click "Broadcast Mode" --> "Schedule Broadcast" --> "Schedule Summary."

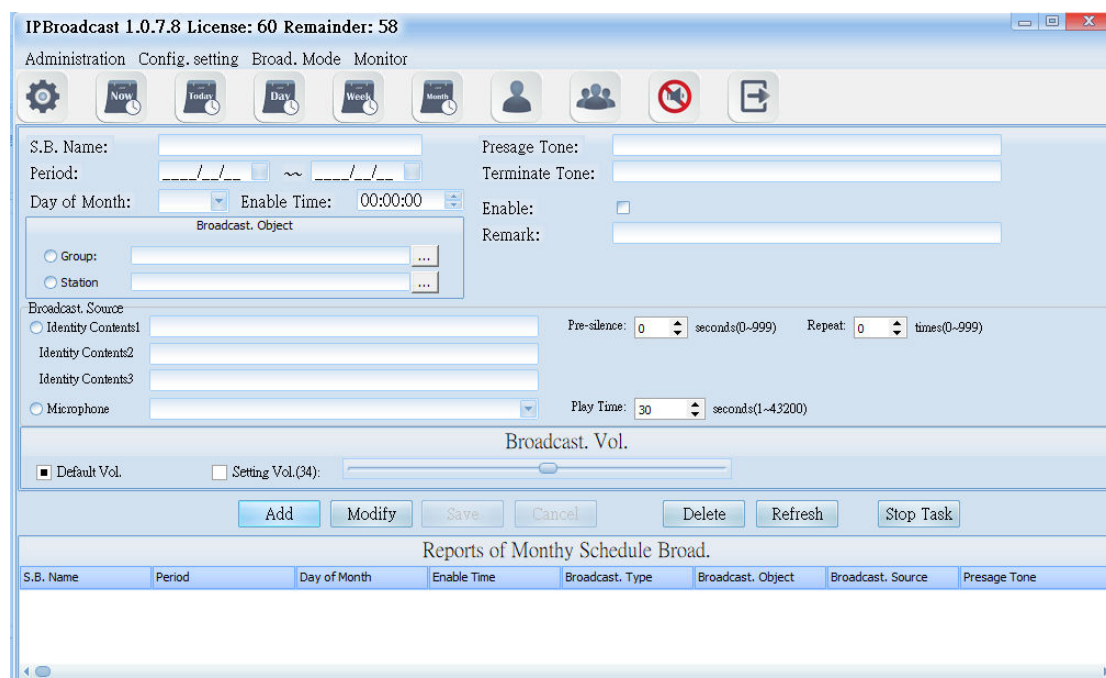
Schedule summary will record all the schedules which have already been set.



6.5. Monthly Schedule

Select [Broad.Mode] --> [Scheduled broadcasts] --> [Monthly Schedule]

Users can arrange a single execution day in every month, to conduct broadcast to a single or group broadcast points. The broadcast source can be sound file or external sound source



6.5.1 Schedule Date and Prelude/Ending Sound Setting

IPBroadcast 1.0.7.8 License: 60 Remainder: 58

Administration Config. setting Broad. Mode Monitor

S.B. Name: _____

Period: _____

Day of Month: _____ Enable Time: 00:00:00

Broadcast. Object

☐ Group: _____

☐ Station: _____

Broadcast. Source

☐ Identity Contents1: _____

☐ Identity Contents2: _____

☐ Identity Contents3: _____

☐ Microphone: _____

Pre-silence: 0 seconds(0-999) Repeat: 0 times(0-999)

Play Time: 30 seconds(1-43200)

Broadcast. Vol.

☒ Default Vol. ☐ Setting Vol.(34): _____

Add Modify Save Cancel Delete Refresh Stop Task

Reports of Monthly Schedule Broad.

S.B. Name	Period	Day of Month	Enable Time	Broadcast. Type	Broadcast. Object	Broadcast. Source	Presage Tone

Column	Specification
S.B.Name	Input the schedule name to be established
Period	Select the effective starting and ending dates of the schedule
Day of Month	Select the date of each month to execute the schedule
Enable Time	Input the schedule's execution time; the time is 24-hour system
Presage Tone	Select the path storing the prelude sound and file name; the words of the folder names of the sound file and storage path shall have no space, the sound file format is MP3 or WAV
Terminate Tone	Select the path and file name of ending sound file storage; the words of the folder names of the sound file and storage path shall have no space, the sound file format is MP3 or WAV

6.5.2 Broadcast Object Setting

Column	Specification
Broadcast.Object	Select a single or group broadcast point as the broadcast object

6.5.3 Broadcast Source setting

Column	Specification
Identity Contents	Select the path storing the prelude sound and file name; the words of the folder names of the sound file and storage path shall have no space, the sound file format is MP3 or WAV
Pre-silence	Set the mute seconds before playing the sound file; it is preset to be 0; setting range is 0-999 seconds
Repeat	Set the circular play times of the sound file; it is preset to be 0; setting range is 0-999 times
Microphone	Select the sound source input of other sound devices as play source
Play Time	Set the play time of other sound sources; it is preset to be 30; setting range is 1-3600 seconds

6.5.4 Broadcast Point Volume

Set the schedule broadcast point volume to be the preset volume or user's appointed volume (setting range is 64-0)

[illegible]

Column	Specification
Default Vol.	Select the preset volume when the broadcast point is established
Setting Vol.	Select to use the appointed volume; setting range is 64-0

Using steps of schedule broadcast/Monthly schedule

Step 1. Press [Add] to start setting

Step 2. Set effective date, the date of each month and preset time

Step 3. Select the object to be broadcasted as the single or group broadcast point

Step 4. Select the play source as sound file or sound source input of other sound devices

Step 5. Select the broadcast point volume of the broadcast object as preset volume or appointed volume

Step 6. Press [Save] to finish monthly schedule setting

* To change or delete schedule, select the established schedule in the list and press [Modify] or [Delete] to finish schedule change/deletion *

6.6. Weekly Schedule

Select [Broad.Mode] --> [Scheduled broadcasts]--> [Weekly Schedule]

Users can arrange the execution day of each month to conduct broadcast to a single or group broadcast point. The broadcast source can be sound file or external sound source

The screenshot displays the 'IPBroadcast 1.0.7.8' software interface. The title bar indicates 'License: 60 Remainder: 58'. The menu bar includes 'Administration', 'Config. setting', 'Broad. Mode', and 'Monitor'. The toolbar contains icons for 'Now', 'Today', 'Day', 'Week', 'Month', 'User', 'Group', 'Delete', and 'Export'.

The main configuration area is divided into several sections:

- S.B. Name:** A text input field.
- Period:** A date range selector with a dropdown arrow.
- Enable Time:** A time input field set to '00:00:00'.
- Broadcast. Object:** Radio buttons for 'Group' and 'Station', each followed by a text input field and a dropdown arrow.
- Broadcast. Source:** Radio buttons for 'Identity Contents' (selected), 'Identity Contents2', 'Identity Contents3', and 'Microphone'. Each has a corresponding text input field.
- Presage Tone:** A text input field.
- Terminate Tone:** A text input field.
- Remark:** A text input field.
- Enable:** A checkbox.
- Days:** Checkboxes for 'Monday', 'Tuesday', 'Wednesday', 'Thursday', 'Friday', 'Saturday', and 'Sunday'. 'Monday' through 'Thursday' are checked.
- Pre-silence:** A numeric input field set to '0' with a unit of 'seconds(0-999)'.
- Repeat:** A numeric input field set to '0' with a unit of 'times(0-999)'.
- Play Time:** A numeric input field set to '30' with a unit of 'seconds(1-43200)'.
- Broadcast. Vol.:** A section with a 'Default Vol.' checkbox (checked) and a 'Setting Vol.(34):' slider.

At the bottom, there are buttons for 'Add', 'Modify', 'Save', 'Cancel', 'Delete', 'Refresh', and 'Stop Task'.

Below the buttons is a section titled 'Reports of Weekly Schedule Broad.' containing a table with the following columns: 'S.B. Name', 'Period', 'Enable Time', 'Monday', 'Tuesday', 'Wednesday', 'Thursday', 'Friday', 'Saturday', 'Sunday', and 'Broadcast. Typ'.

6.6.1 Schedule Date and Prelude/Ending Sound Setting

Column	Specification
S.B.Name	Input the schedule name to be established
Period	Start the effective starting and ending dates of the schedule
Enable Time	Input the schedule's execution time; the time is 24-hour system
Presage Tone	Select the path storing the prelude sound and file name; the words of the folder names of the sound file and storage path shall have no space, the sound file format is MP3 or WAV
Terminate Tone	Select the path and file name of ending sound file storage; the words of the folder names of the sound file and storage path shall have no space, the sound file format is MP3 or WAV
Enable	Select whether to start the schedule; it is preset to start
Remark	Input remark materials

6.6.2 Broadcast Object Setting

IPBroadcast 1.0.7.8 License: 60 Remainder: 58

Administration Config. setting Broad. Mode Monitor

S.B. Name: Period: ~ Enable Time: 00:00:00

Presage Tone: Terminate Tone: Remark: Enable: ☐

Broadcast. Object

☐ Group:

☐ Station:

Broadcast Source

☒ Identity Contents Pre-silence: 0 seconds(0-999) Repeat: 0 times(0-999)

Identity Contents2:

Identity Contents3:

☐ Microphone Play Time: 30 seconds(1-43200)

Broadcast. Vol.

☒ Default Vol. ☐ Setting Vol.(34):

Reports of Weekly Schedule Broad.

S.B. Name	Period	Enable Time	Monday	Tuesday	Wednesday	Thursday	Friday	Saturday	Sunday	Broadcast. Typ

Column	Specification
Broadcast.Object	Select a single or group broadcast point as the broadcast object

6.6.3 Broadcast Source Setting

IPBroadcast 1.0.7.8 License: 60 Remainder: 58

Administration Config. setting Broad. Mode Monitor

S.B. Name: Period: ~ Enable Time: 00:00:00

Presage Tone: Terminate Tone: Remark: Enable: ☐

Broadcast. Object

☐ Group:

☐ Station:

Broadcast Source

☒ Identity Contents Pre-silence: 0 seconds(0-999) Repeat: 0 times(0-999)

Identity Contents2:

Identity Contents3:

☐ Microphone Play Time: 30 seconds(1-43200)

Broadcast. Vol.

☒ Default Vol. ☐ Setting Vol.(34):

Reports of Weekly Schedule Broad.

S.B. Name	Period	Enable Time	Monday	Tuesday	Wednesday	Thursday	Friday	Saturday	Sunday	Broadcast. Typ

Column	Specification
Identity Contents	Select the path storing the prelude sound and file name; the words of the folder names of the sound file and storage path shall have no space, the sound file format is MP3 or WAV
Pre-silence	Set the mute seconds before playing the sound file; it is preset to be 0; setting range is 0-999 seconds
Repeat	Set the circular play times of the sound file; it is preset to be 0; setting range is 0-999 times
Microphone	Select the sound source input of other sound devices as play source
Play Time	Set the play time of other sound sources; it is preset to be 30; setting range is 1-3600 seconds

6.6.4 Broadcast Point Volume

Set the broadcast point volume of schedule to be preset volume or appointed volume(setting range is 64~0)

IPBroadcast 1.0.7.8 License: 60 Remainder: 58

Administration Config. setting Broad. Mode Monitor

S.B. Name: _____ Period: ____/____/____ Enable Time: 00:00:00

Broadcast. Object
☐ Group: _____
☐ Station: _____

Broadcast. Source
☒ Identity Contents _____
 Identity Contents2: _____
 Identity Contents3: _____
☐ Microphone _____

Presage Tone: _____
 Terminate Tone: _____
 Remark: _____
 Enable: ☐

☒ Monday ☒ Tuesday ☒ Wednesday ☒ Thursday
☒ Friday ☐ Saturday ☐ Sunday

Pre-silence: 0 seconds(0-999) Repeat: 0 times(0-999)

Play Time: 30 seconds(1-3600)

Broadcast. Vol.
☒ Default Vol. ☐ Setting Vol.(34): _____

Add Modify Save Cancel Delete Refresh Stop Task

Reports of Weekly Schedule Broad.

S.B. Name	Period	Enable Time	Monday	Tuesday	Wednesday	Thursday	Friday	Saturday	Sunday	Broadcast. Typ

Column	Specification
Default Vol.	Select the preset volume when the broadcast point is established
Setting Vol.	Select to use appointed volume; setting range is 64-0

Using steps of schedule broadcast/Weekly schedule

Step 1. Press [Add] to start setting

Step 2. Set effective date, the date of each month and preset time

Step 3. Select the object to be broadcasted as the single or group broadcast point

Step 4. Select the play source as sound file or sound source input of other sound devices

Step 5. Select the broadcast point volume of the broadcast object as preset volume or appointed volume

Step 6. Press [Save] to finish monthly schedule setting

* * * To change or delete schedule, select the established schedule in the list

and press [Modify] or [Delete] to finish schedule change/deletion * * *

6.7 Schedule of Special Day

Select [Broad.Mode] --> [Scheduled broadcasts]--> [Fixed Date]

Users can arrange a certain special festival (day), to conduct broadcast to a single or group broadcast. The broadcast source can be sound file or external sound source

The screenshot displays the 'IPBroadcast 1.0.7.8' application window. The title bar indicates the license status: 'License: 60 Remainder: 58'. The menu bar includes 'Administration', 'Config. setting', 'Broad. Mode', and 'Monitor'. The toolbar contains icons for settings, now, today, day, week, month, user, group, delete, and save. The main configuration area is divided into several sections:

- S.B. Name:** A text input field.
- Enable Time:** A date and time picker set to '00:00:00'.
- Broadcast. Object:** Radio buttons for 'Group' and 'Station', each followed by a selection dropdown.
- Broadcast. Source:** Radio buttons for 'Identity Contents1', 'Identity Contents2', 'Identity Contents3', and 'Microphone'. Each has a corresponding text input field.
- Pre-silence:** A spinner set to '0' seconds (0-999).
- Repeat:** A spinner set to '0' times (0-999).
- Play Time:** A spinner set to '30' seconds (1-43200).
- Enable:** A checkbox that is currently unchecked.
- Remark:** A text input field.
- Broadcast. Vol.:** A section with a 'Default Vol.' checkbox and a 'Setting Vol.(34)' slider.

At the bottom of the configuration area are buttons for 'Add', 'Modify', 'Save', 'Cancel', 'Delete', 'Refresh', and 'Stop Task'. Below this is a table titled 'Reports of Fixed Date Schedule Broad.' with columns: 'S.B. Name', 'Enable Time', 'Broadcast. Type', 'Broadcast. Object', 'Broadcast. Source', 'Presage Tone', and 'Identity Contents1'. The table is currently empty.

6.7.1 Schedule Date and Prelude/Ending Setting

Column	Specification
S.B.Name	Input the schedule name to be established
Enable Time	Input the schedule's execution time; the time is 24-hour system
Presage Tone	Select the path storing the prelude sound and file name; the words of the folder names of the sound file and storage path shall have no space, the sound file format is MP3 or WAV
Terminate Tone	Select the path and file name of ending sound file storage; the words of the folder names of the sound file and storage path shall have no space, the sound file format is MP3 or WAV
Enable	Select whether to start the schedule; it is preset to start
Remark	Input remark materials

6.7.2 Broadcast Object Setting

IPBroadcast 1.0.7.8 License: 60 Remainder: 58

Administration Config. setting Broad. Mode Monitor

S.B. Name: Presage Tone:

Enable Time: 00:00:00 Terminate Tone:

Broadcast. Object

☐ Group: ...

☐ Station: ...

Broadcast. Source

☐ Identity Contents1: Pre-silence: seconds(0-999) Repeat: times(0-999)

☐ Identity Contents2:

☐ Identity Contents3:

☐ Microphone: Play Time: seconds(1-43200)

Broadcast. Vol.

☒ Default Vol. ☐ Setting Vol.(34):

Add Modify Save Cancel Delete Refresh Stop Task

Reports of Fixed Date Schedule Broad.

S.B. Name	Enable Time	Broadcast. Type	Broadcast. Object	Broadcast. Source	Presage Tone	Identity Contents1

Column	Specification
Broadcast.Object	Select a single or group broadcast point as the broadcast object

6.7.3 Broadcast Source setting

IPBroadcast 1.0.7.8 License: 60 Remainder: 58

Administration Config. setting Broad. Mode Monitor

S.B. Name: Presage Tone:

Enable Time: 00:00:00 Terminate Tone:

Broadcast. Object

☐ Group: ...

☐ Station: ...

Broadcast. Source

☐ Identity Contents1: Pre-silence: seconds(0-999) Repeat: times(0-999)

☐ Identity Contents2:

☐ Identity Contents3:

☐ Microphone: Play Time: seconds(1-43200)

Broadcast. Vol.

☒ Default Vol. ☐ Setting Vol.(34):

Add Modify Save Cancel Delete Refresh Stop Task

Reports of Fixed Date Schedule Broad.

S.B. Name	Enable Time	Broadcast. Type	Broadcast. Object	Broadcast. Source	Presage Tone	Identity Contents1

Column	Specification Input remark materials
Identity Contents	Select the path storing the prelude sound and file name; the words of the folder names of the sound file and storage path shall have no space, the sound file format is MP3 or WAV
Pre-silence	Set the mute seconds before playing the sound file; it is preset to be 0; setting range is 0-999 seconds
Repeat	Set the circular play times of the sound file; it is preset to be 0; setting range is 0-999 times
Microphone	Select the sound source input of other sound devices as play source
Play Time	Set the play time of other sound sources; it is preset to be 30; setting range is 1-3600 seconds

6.7.4 Broadcast Point Volume

Set the broadcast point volume of schedule to be the preset volume or appointed volume (setting range is 64-0)

IPBroadcast 1.0.7.8 License: 60 Remainder: 58

Administration Config. setting Broad. Mode Monitor

S.B. Name: Presage Tone:

Enable Time: 00:00:00 Terminate Tone:

Broadcast. Object

☐ Group:

☐ Station:

Broadcast. Source

☐ Identity Contents1 Pre-silence: seconds(0-999) Repeat: times(0-999)

Identity Contents2

Identity Contents3

☐ Microphone Play Time: seconds(1-43200)

Broadcast. Vol.

☒ Default Vol. ☐ Setting Vol.(34):

Reports of Fixed Date Schedule Broad.

S.B. Name	Enable Time	Broadcast. Type	Broadcast. Object	Broadcast. Source	Presage Tone	Identity Contents1

Column	Specification
Default Vol.	Select the preset volume when the broadcast point is established
Setting Vol.	Select to use appointed volume; setting range is 64-0

Using steps of schedule broadcast/special day schedule

Step 1. Press [Add] to start setting

Step 2. Set preset date and time

Step 3. Select the object to be broadcasted as the single or group broadcast point

Step 4. Select the play source as sound file or sound source input of other sound devices

Step 5. Select the broadcast point volume of the broadcast object as preset volume or appointed volume

Step 6. Press [Save] to finish monthly schedule setting

*** * * To change or delete schedule, select the established schedule in**

the list and press [Modify] or [Delete] to finish schedule change/deletion

*** * ***

6.8 Today Schedule

Select [Broad.Mode] --> [Scheduled broadcasts]--> [Today Schedule]

Select [Broad.Mode]-->[Today Schedule]

Users can arrange to conduct broadcast to a single or group broadcast points on current day. The broadcast source can be sound file or external sound sources

IPBroadcast 1.0.7.8 License: 60 Remainder: 58

Administration Config. setting Broad. Mode Monitor

S.B. Name:

Enable Time: 00:00:00

Broadcast Object

☐ Group:

☐ Station:

Broadcast Source

☐ Identity Contents1:

Identity Contents2:

Identity Contents3:

☐ Microphone:

Presage Tone:

Terminate Tone:

Enable: ☐

Remark:

Pre-silence: 0 seconds(0-999) Repeat: 0 times(0-999)

Play Time: 30 seconds(1-43200)

Broadcast Vol.

☒ Default Vol. ☐ Setting Vol.(34):

Add Modify Save Cancel Delete Refresh Stop Task

Reports of Today Schedule Broad.

S.B. Name	Enable Time	Broadcast Type	Broadcast Object	Broadcast Source	Presage Tone	Identity Contents1

6.8.1 Schedule Day, Prelude/Ending Sound Setting

IPBroadcast 1.0.7.8 License: 60 Remainder: 58

Administration Config. setting Broad. Mode Monitor

S.B. Name:

Enable Time: 00:00:00

Broadcast Object

☐ Group:

☐ Station:

Broadcast Source

☐ Identity Contents1:

Identity Contents2:

Identity Contents3:

☐ Microphone:

Presage Tone:

Terminate Tone:

Enable: ☐

Remark:

Pre-silence: 0 seconds(0-999) Repeat: 0 times(0-999)

Play Time: 30 seconds(1-43200)

Broadcast Vol.

☒ Default Vol. ☐ Setting Vol.(34):

Add Modify Save Cancel Delete Refresh Stop Task

Reports of Today Schedule Broad.

S.B. Name	Enable Time	Broadcast Type	Broadcast Object	Broadcast Source	Presage Tone	Identity Contents1

Column	Specification
S.B.Name	Input the schedule name to be established
Enable Time	Input the schedule's execution time; the time is 24-hour system
Presage Tone	Select the path storing the prelude sound and file name; the words of the folder names of the sound file and storage path shall have no space, the sound file format is MP3 or WAV
Terminate Tone	Select the path and file name of ending sound file storage; the words of the folder names of the sound file and storage path shall have no space, the sound file format is MP3 or WAV
Enable	Select whether to start the schedule; it is preset to start
Remark	Input remark materials

6.8.2 Broadcast Object Setting

IPBroadcast 1.0.7.8 License: 60 Remainder: 58

Administration Config. setting Broad. Mode Monitor

S.B. Name:

Enable Time: 00:00:00

Presage Tone:

Terminate Tone:

Enable: ☐

Remark:

Broadcast. Object

☐ Group: ...

☐ Station: ...

Broadcast. Source

☐ Identity Contents1:

☐ Identity Contents2:

☐ Identity Contents3:

☐ Microphone:

Pre-silence: 0 seconds(0-999) Repeat: 0 times(0-999)

Play Time: 30 seconds(1-43200)

Broadcast. Vol.

☒ Default Vol. ☐ Setting Vol.(34):

Add Modify Save Cancel Delete Refresh Stop Task

Reports of Today Schedule Broad.

S.B. Name	Enable Time	Broadcast. Type	Broadcast. Object	Broadcast. Source	Presage Tone	Identity Contents1

Column	Specification
Broadcast.Object	Select a single or group broadcast points as the broadcast object

6.8.3 Display source setting

Column	Specification
Identity Contents	Select the path storing the prelude sound and file name; the words of the folder names of the sound file and storage path shall have no space, the sound file format is MP3 or WAV
Pre-silence	Set the mute seconds before playing the sound file; it is preset to be 0; setting range is 0-999 seconds
Repeat	Set the circular play times of the sound file; it is preset to be 0; setting range is 0-999 times
Microphone	Select the sound source input of other sound devices as play source
Play Time	Set the play time of other sound sources; it is preset to be 30; setting range is 1-3600 seconds

6.8.4 Broadcast Point Volume

Set the broadcast point volume of group broadcast to be preset volume or appointed volume (setting range is 64~0)

Column	Specification
Default Vol.	Select the preset volume when the broadcast point is established
Setting Vol.	Select to use appointed volume; setting range is 64-0

Using steps of schedule broadcast/today schedule

Step 1. Press [Add] to start setting

Step 2. Set preset date and time

Step 3. Select the object to be broadcasted as the single or group broadcast point

Step 4. Select the play source as sound file or sound source input of other sound devices

Step 5. Select the broadcast point volume of the broadcast object as preset volume or appointed volume

Step 6. Press [Save] to finish monthly schedule setting

* * * **To change or delete schedule, select the established schedule in the list and press [Modify] or [Delete] to finish schedule change/deletion**

* * *

6.9 Immediate Execution of Schedule

Select [Broad.Mode] --> [Scheduled broadcasts]--> [Immediately Schedule]

Users can arrange to conduct broadcast to a single or group broadcast point immediately. The broadcast source can be sound file or external sound sources

IPBroadcast 1.0.7.8 License: 60 Remainder: 58

Administration Config. setting Broad. Mode Monitor

S.B. Name:

Broadcast Object

☐ Group:

☐ Station:

Broadcast Source

☐ Identity Contents1:

☐ Identity Contents2:

☐ Identity Contents3:

☐ Microphone:

Pre-silence: seconds(0-999) Repeat: times(0-999)

Play Time: seconds(1-43200)

Broadcast Vol.

☒ Default Vol. ☐ Setting Vol.(35):

Add Modify Save Cancel Delete Refresh Stop Task Restart

Reports of Immediately Schedule Broad.

S.B. Name	Broadcast Type	Broadcast Object	Broadcast Source	Presage Tone	Identity Contents1

6.9.1 Prelude/Ending Sound Setting

IPBroadcast 1.0.7.8 License: 60 Remainder: 58

Administration Config. setting Broad. Mode Monitor

S.B. Name:

Broadcast Object

☐ Group:

☐ Station:

Broadcast Source

☐ Identity Contents1:

☐ Identity Contents2:

☐ Identity Contents3:

☐ Microphone:

Pre-silence: seconds(0-999) Repeat: times(0-999)

Play Time: seconds(1-43200)

Broadcast Vol.

☒ Default Vol. ☐ Setting Vol.(35):

Add Modify Save Cancel Delete Refresh Stop Task Restart

Reports of Immediately Schedule Broad.

S.B. Name	Broadcast Type	Broadcast Object	Broadcast Source	Presage Tone	Identity Contents1

Column	Specification
S.B.Name	Input the schedule name to be established
Presage Tone	Select the path storing the prelude sound and file name; the words of the folder names of the sound file and storage path shall have no space, the sound file format is MP3 or WAV
Terminate Tone	Select the path and file name of ending sound file storage; the words of the folder names of the sound file and storage path shall have no space, the sound file format is MP3 or WAV
Remark	Input remark materials

6.9.2 Broadcast Object Setting

IPBroadcast 1.0.7.8 License: 60 Remainder: 58

Administration Config. setting Broad. Mode Monitor

☐ Now
 ☐ Today
 ☐ Day
 ☐ Week
 ☐ Month
 ☐ User
 ☐ Group
 ☐ No
 ☐ Yes

S.B. Name:

Presage Tone:

Terminate Tone:

Remark:

Broadcast. Object

☐ Group: ...

☐ Station: ...

Broadcast. Source:

☐ Identity Contents1:

☐ Identity Contents2:

☐ Identity Contents3:

☐ Microphone:

Pre-silence: seconds(0-999) Repeat: times(0-999)

Play Time: seconds(1~43200)

Broadcast. Vol.

☒ Default Vol.
 ☐ Setting Vol.(35):

Reports of Immediately Schedule Broad.

S.B. Name	Broadcast. Type	Broadcast. Object	Broadcast. Source	Presage Tone	Identity Contents1

Column	Specification
Broadcast.Object	Select a single or group broadcast point as the broadcast object

6.9.3 Broadcast Source Setting

IPBroadcast 1.0.7.8 License: 60 Remainder: 58

Administration Config. setting Broad. Mode Monitor

S.B. Name:

Broadcast Object

☐ Group:

☐ Station:

Presage Tone:

Terminate Tone:

Remark:

Broadcast Source

☐ Identity Contents1:

Identity Contents2:

Identity Contents3:

☐ Microphone:

Pre-silence: seconds(0-999) Repeat: times(0-999)

Play Time: seconds(1~43200)

Broadcast Vol.

☒ Default Vol. ☐ Setting Vol.(35):

Add Modify Save Cancel Delete Refresh Stop Task Restart

Reports of Immediately Schedule Broad.

S.B. Name	Broadcast Type	Broadcast Object	Broadcast Source	Presage Tone	Identity Contents 1

Column	Specification
Identity Contents	Select the path storing the prelude sound and file name; the words of the folder names of the sound file and storage path shall have no space, the sound file format is MP3 or WAV
Pre-silence	Set the mute seconds before playing the sound file; it is preset to be 0; setting range is 0-999 seconds
Repeat	Set the circular play times of the sound file; it is preset to be 0; setting range is 0-999 times
Microphone	Select the sound source input of other sound devices as play source
Play Time	Set the play time of other sound sources; it is preset to be 30; setting range is 1-3600 seconds

6.9.4 Broadcast Point Volume

Set the broadcast point volume of group broadcast to be preset volume or the user's appointed volume (setting range is 64~0)

IPBroadcast 1.0.7.8 License: 60 Remainder: 58

Administration Config. setting Broad. Mode Monitor

S.B. Name: Broadcast. Object:

Presage Tone: Terminate Tone: Remark:

Broadcast. Source: ☐ Identity Contents1 ☐ Identity Contents2 ☐ Identity Contents3 ☐ Microphone

Pre-silence: seconds(0-999) Repeat: times(0-999)

Play Time: seconds(1~43200)

Broadcast. Vol.

☒ Default Vol. ☐ Setting Vol.(35):

Add Modify Save Cancel Delete Refresh Stop Task Restart

Reports of Immediately Schedule Broad.

S.B. Name	Broadcast. Type	Broadcast. Object	Broadcast. Source	Presage Tone	Identity Contents1

Column	Specification
Default Vol.	Select the preset volume when the broadcast point is established
Setting Vol.	Select to use appointed volume; setting range is 64-0

Using steps of schedule broadcast/immediate execution of schedule

Step 1. Press [Add] to start setting

Step 2. Select the object to be broadcasted as the single or group broadcast point

Step 3. Select the play source as sound file or sound source input of other sound devices

Step 4. Select the broadcast point volume of the broadcast object as preset volume or appointed volume

Step 5. Press [Save] to finish immediate execution of schedule setting. The system will execute the schedule immediately. Select the schedule to be executed in the list, and then press [Restart] to execute the schedule

IPBroadcast 1.0.7.8 License: 60 Remainder: 58

Administration Config. setting Broad. Mode Monitor

S.B. Name: test

Broadcast. Object

☒ Group: test group

☐ Station

Broadcast. Source

☒ Identity Contents1 C:\test.mp3

Identity Contents2

Identity Contents3

☐ Microphone

Pre-silence: 0 seconds(0-999) Repeat: 0 times(0-999)

Play Time: 30 seconds(1-43200)

Broadcast. Vol.

☒ Default Vol. ☐ Setting Vol.(35):

Add Modify Save Cancel Delete Refresh Stop Task Restart

Reports of Immediately Schedule Broad.

S.B. Name	Broadcast Type	Broadcast Object	Broadcast Source	Presage Tone	Identity Contents1
test	Group	test group	File		C:\test.mp3

* * * To change or delete schedule, select the established schedule in the list and press [Modify] or [Delete] to finish schedule change/deletion

* * *

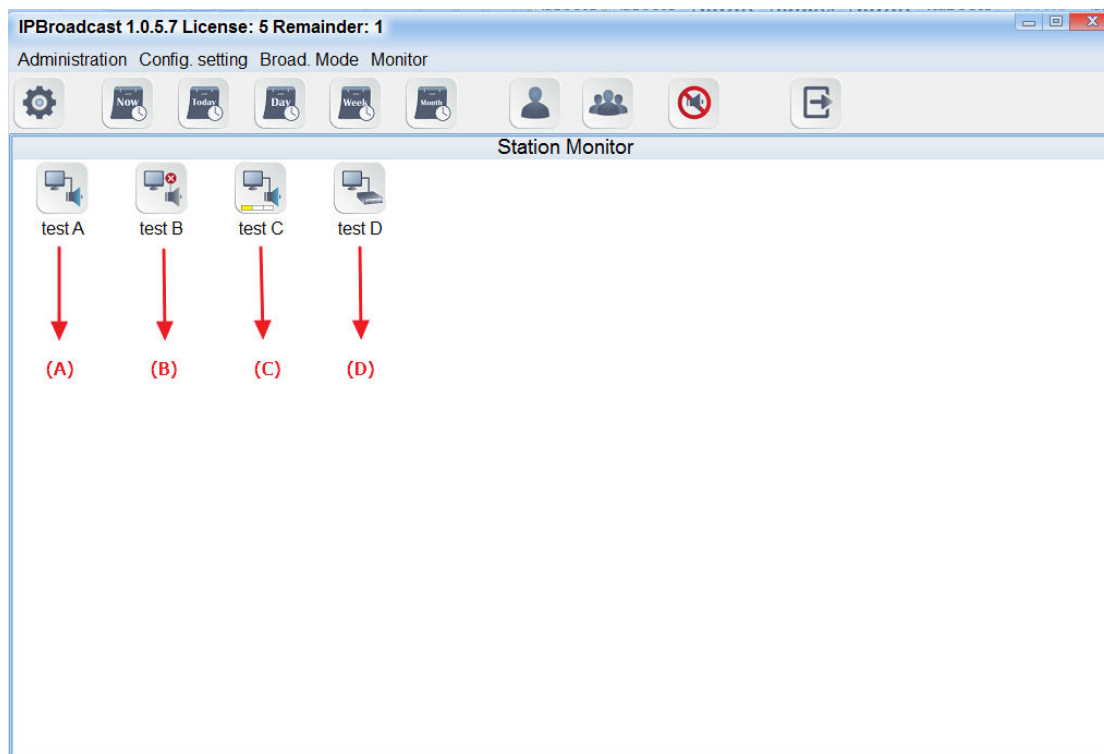
7. Monitoring

Equipment Station

Select [Monitor]-->[Station Monitor]

The equipment station can show whether the present broadcast points are normally connected with the system. When the broadcast system is operating, operators can judge whether the remote loudspeaker sends sound normally from the volume change in the diagram, so as to learn the state of broadcast points.

The following picture shows the meaning of each diagram



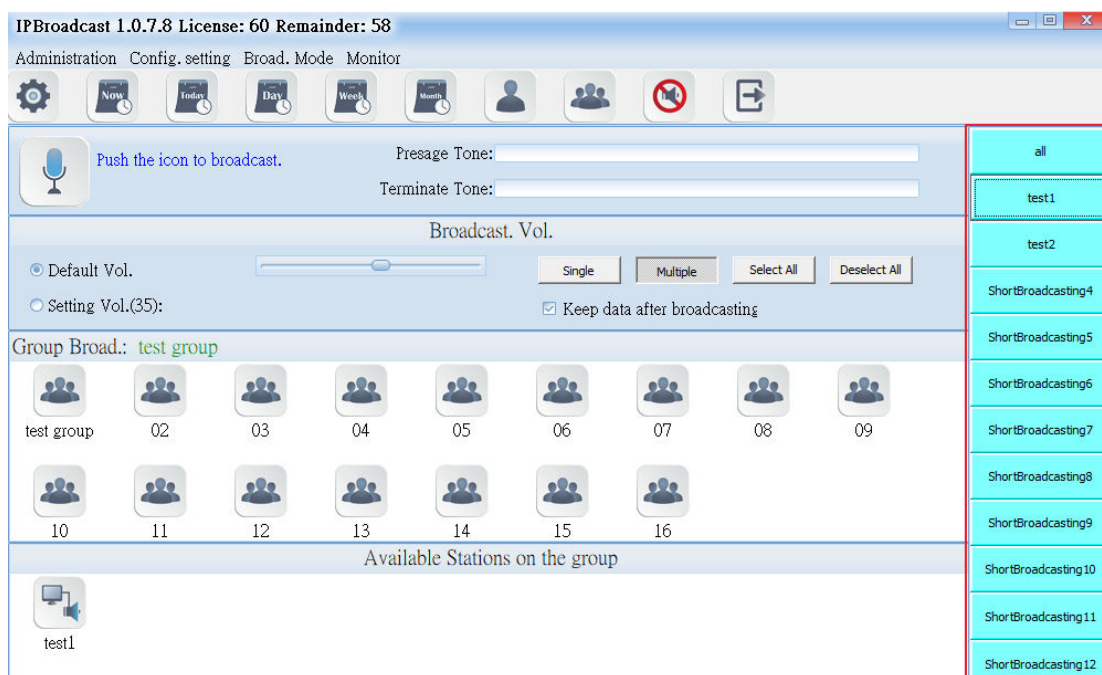
(A) diagram: the broadcast point is normally connected with the system at present

(B) diagram: the broadcast point is abnormally connected with the system at present

(C) diagram: the broadcast point is working and the loudspeaker has normal sound production

(D) diagram: the broadcast point is working and it is an Audio gateway

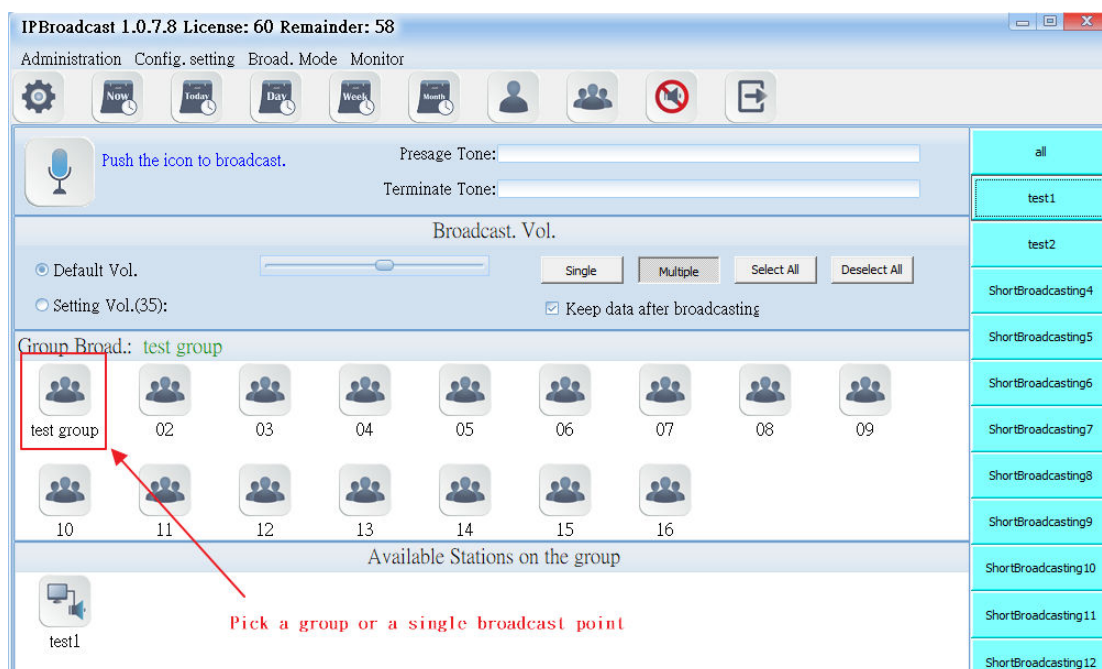
***Note: IS-381,IS-382,IS-3840 is IP Audio gateway. When the broadcast is working, it cannot be judged whether the terminal loudspeaker connected with gateway has normal sound production ***



Set the method of keyboard shortcuts

Step 1

Select broadcast points or groups added to the keyboard shortcuts.



Step 2

From the short broadcasting list on the right side, select one of them. And then click “Save Data” with right click of the mouse. After being confirmed, the key will remember these selected broadcast points or groups. Also, you can change their names or clear their data.

