



TEMA TELECOMUNICAZIONI

"IP COMMUNICATION AND SECURITY COMPANY"

WWW.TEMATLC.IT

AD696/B

Paging Microphone Base for Announcements



Serie Audio Over IP Network
"SipComStage"

Products for VoIP SIP LAN networking Communications, Paging Amplifiers Systems and Audio Applications. Zone Announcements, Night Ringer, Multicast general call, Background music, Standard SIP call or Emergency call, SD memory with pre-recorded messages, Relays for LAN drives.

PRODUCT MANUAL

Version HW 1.0



Revision	Date	Revision reason	Prepared	Checked/Approved
0	20/03/2018	First release	DP	DP, FL



DICHIARAZIONE DI CONFORMITÀ CE

DECLARATION OF CONFORMITY CE

We, **TEMA TELECOMUNICAZIONI SRL Via C. Girardengo, 1/4 - 20161 MILANO**

declare under our sole responsibility that the product:

Product name **Base microfonica per annunci**

Trade name **TEMA TELECOMUNICAZIONI Srl**

Type or model **AD696/B**

and accessories --

to which this declaration relates is in conformity with the essential requirements and other relevant requirements of the R&TTE Directive (1999/5/EC, 2006/95/EC, 2004/108/EC).

The product is in conformity with the followings standards and/or other normative documents:

HEALT & SAFETY EN 60950-1:2006 +A11:2009 +A1:2010 +A12:2011

EMC EN 55022:2010, EN 55024:2010, EN 61000-3-2:2006
EN 61000-3-3 :2008

MILANO, 27 February 2018

TEMA TELECOMUNICAZIONI SRL
D. Pontillo

I. IMPORTANT INFORMATIONS REGARDING THE RECOVERY AND RECYCLING OF THIS ELECTRONIC DEVICE

The crossed-out wheeled bin symbol below indicates that this electronic equipment is intended to be disposed in a separate collection and not in an unsorted municipal waste, in order to provide for the treatment of WEEE (Waste Electrical and Electronic Equipment) using best available recovery and recycling techniques. Specific treatment for WEEE is indispensable in order to avoid the dispersion of pollutants and other hazardous substances into the waste stream, while recycling leads to reduction of disposal of waste and the negative impacts on environment and human health. That is, priority is given to reuse of WEEE in its components, subassemblies and consumables. As the final holder, the user has an important role in contributing to reuse, recycling and other forms of recovery of WEEE and is responsible to return this waste in the collection facilities set up by EC Member States and to fulfill other duties in compliance with Directive 2002/96/EC and local laws.



TEMA TELECOMUNICAZIONI is a certified company



UNI EN ISO 9001:2015

RECOMMENDATIONS

1. It is recommended to read this entire manual before proceeding to the installation of the device.
2. The installation and commissioning of the device can only be performed by specialized technicians.
3. The device is accurately manufactured and tested. In any case, the product is not recommended for use where an error of operations can cause property damage and/or injury to persons.
4. It is expressly not recommended maintenance inside the device which must be carried out by Tema Telecomunicazioni, the removal of the closures will invalidate the warranty and makes accessible internal parts with risk of electric shock.
5. Tema Telecomunicazioni accepts no responsibility for damage to property and/or persons resulting from incorrect use of the equipment or by procedures that do not comply with the instructions in this manual. Tema Telecomunicazioni reserves the right to make modification to the technical and functional specifications at any time and without any notice.
6. Products powered via PoE (Power over Ethernet) may only be connected with cables coming from the internal network company (inside the building), are not allowed connections LAN cables coming from outside the building.
7. Use for this device only and exclusively original spare parts and consumables supplied by Tema Telecomunicazioni. The company is not responsible for damage caused by the use of materials not supplied by the same.
8. Do not expose the unit to direct sunlight, protect from heat, dust, humidity and chemicals.
9. Tema Telecomunicazioni reserves the right to vary the product characteristics for improvement without prior notice. Check the WWW.TEMATLC.IT website for any updates to the latest firmware, manuals, and technical documentation.
10. This document is property of Tema Telecomunicazioni, It is forbidden any duplication and reproduction, even partial, as well as storage on any medium without written permission of Tema Telecomunicazioni.



This symbol in the descriptions indicates a general warning or a damage danger to equipment or people.



This symbol in the descriptions indicates useful information or a suggestion for the optimization of the device functionality.

<i>INDEX</i>	<i>PAGE</i>
1. PRESENTATION	5
2. TECHNICAL SPECIFICATIONS	7
3. PACKING LIST	7
4. OPERATION.....	8
5. CONNECTION.....	8

1. PRESENTATION

The AD696/B paging microphone base can be connected to an AD615 Tema Encoder to launch announcements on the LAN network in Multicast channels to the network amplifiers or to the IP-SIP AD600 series loudspeakers of the SipComStage line.



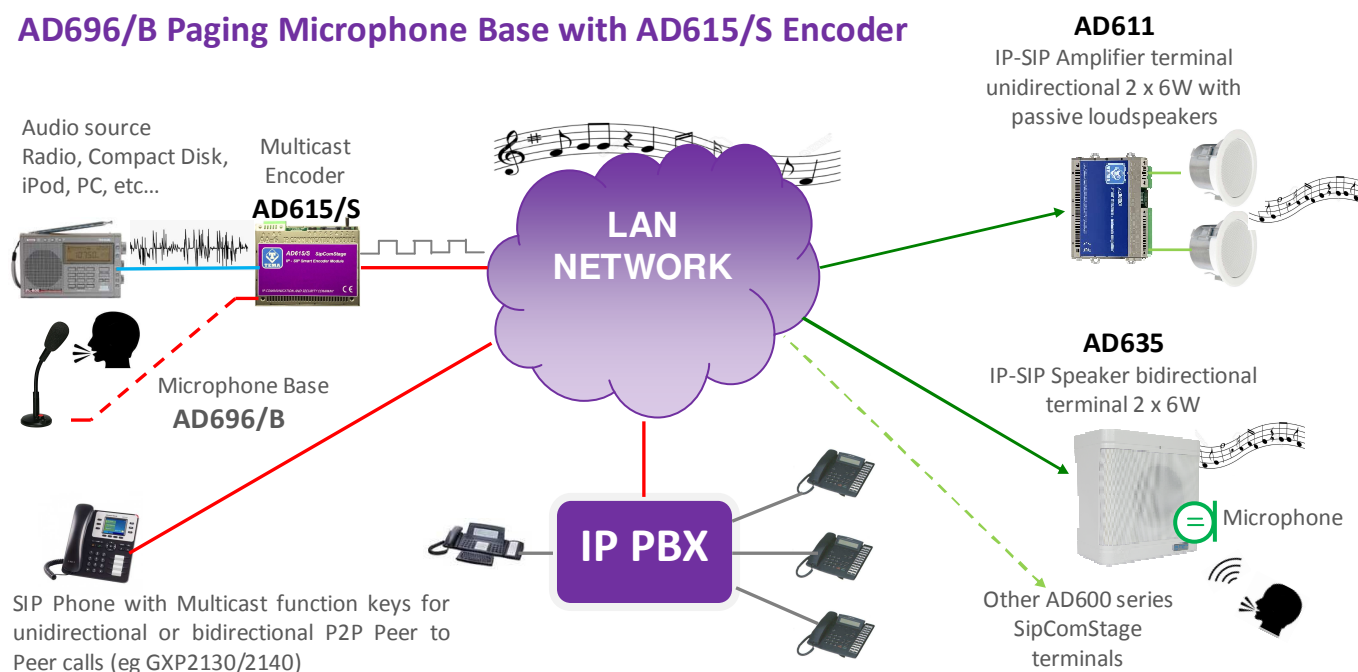
The desktop base is equipped with a "Talk" switch to enable the microphone.

The flexible arm allows the microphone to be oriented according to the best position for the user.

The microphone, of high quality, allows to transmit crystal-clear and intelligible voice announcements.

The cable, with a length of 1.5 meters, is terminated with a RJ45 connector with specific wiring for the Tema AD615 Encoder.

AD696/B Paging Microphone Base with AD615/S Encoder



VoIP SIP Amplifiers-Speakers Products and Accessories of the AD600 "SipComStage" series

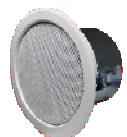
AD630 IP-SIP PoE 25W Horn Speaker with 40W internal amplifier (2x20W) IP65 protection.



AD635 IP-SIP PoE 12W speaker for wall mounting with the possibility of integrating a PoE injector adapter.



AD633 IP-SIP speaker 12W PoE open-to-ceiling version.



AD633C SIP IP-12W PoE Speaker ceiling version with IP54 flameproof cover.



AD610 2X2W PoE IP-SIP Amplifier Module, External Amplifier Adapter with Sound Isolation Transformer. Directly pilot external power amplifiers or 8 Ohm external passive speakers.



AD611 IP-SIP PoE 10W Amplifier Module (2X5W). Directly pilot 8 Ohm external passive speakers.



AD612 IP-SIP PoE 40W (2x20W) Amplifier Module when powered with an external power supply. Directly pilot 8 Ohm external passive speakers.



AD615/S Audio Encoder Module from analog to digital on LAN Network in Multicast/Broadcast Channels.



AD333/12XTP Passive 8 Ohm 12W speaker with anti-flame cover (AD333/12TP without cover), internal transformer for 100V audio line. Ideal for connecting to AD610-611-612 or as 2nd speaker to the AD63x series IP-SIP speakers.



AD335/06TP Passive 8 Ohm 6W speaker with 100V audio line transformer. Ideal for connecting to AD610-611-612 or as 2nd speaker to the AD63x series IP-SIP speakers.



AD330/25T Passive horn speaker 25W 8 ohm with transformer for 100V audio line. Ideal for connecting to the AD610-611-612 modules or as 2nd speaker for AD63x IP-SIP speakers series.



AD330/xx Are available Speakers of different power, Horns and Loudspeakers for flush and ceiling mount.



AA-39DL Plug Power Supply 220Vac/12Vdc-1,0A.



AA-39D1A DIN Power Supply 220Vac/15Vdc-1,0A.



AA-39P4 PoE injector 230Vac/48Vdc 0,5A.



AA-39E3 /-E6V DIN Power Supplies 220Vac/24Vdc-1,5A 220Vac/24Vdc-2,5A.



AD301R 30W analog amplifier, 2 channels, Volume-High-Low +/-12dB controls



AD320/30 PA 100V audio line transformer 30W, constant voltage, high efficiency toroidal type with low magnetic flux leakage.



AD32 Isolation transformer, balanced, mixer, attenuator, audio signal filter, low impedance output. Ideal for decoupling devices of audio sources to other amplifiers to eliminate noises.



AA-36 Protected Power Relay Actuator 250Vac/16A/4KVA, command in AC/DC 12V/24V, 1 contact, Led, contacts protected by electric arcs. Ideal for driving loads up to 4.000W.



AA-697xxx Flash lights with Xeon lamp or high brightness LEDs. Ideal to be controlled by the relay of the IP-SIP speakers of the AD630 series or by the IP-SIP amplifier AD610, AD611, AD612 modules, with a call in progress add a light signal to the acoustic signal.



2. TECHNICAL SPECIFICATIONS

Microphone capsule	Electret condenser
Polar diagram	Cardioid
Frequency response	50 ÷ 16.000 Hz
Output impedance	1000 Ohm
Sensitivity	-40dB (0dB 1V/Pa @1Khz)
Controls	Direct "Talk" button, "Chime" feature not present
Signalings	"Talk" LED
Power Supply	Directly powered by the AD615/S system
Arm	flexible, fixed at the base
Arm lenght	235mm
Arm body	shock resistant metal alloy
Windproof cap	black polyurethane foam
Connector/Cable	RJ45 8-way proprietary, C5 1,5mt
Operating temperature	-10° ÷ -55°C
Storage temperature	-20° ÷ +65°C
Umidity	0-95% non-condensing
Dimensions	80 x H25 mm (base) + 240 mm (arm)
Weight	0.18 kg cable included

3. PACKING LIST

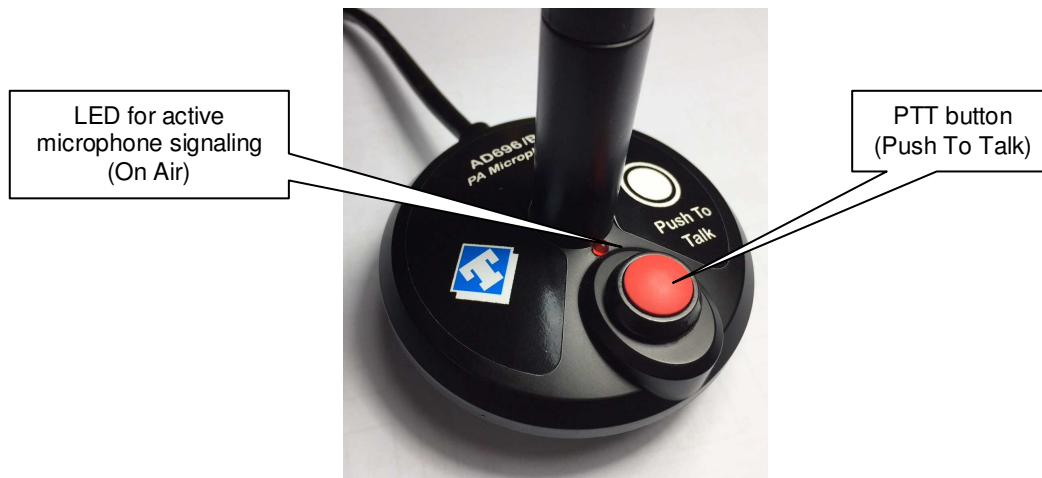
The systems are supplied with the parts included in the following list:

- Una base AD969/B base with integral microphone arm and cable
- A paper manual, system documentation, installation, programming, use
- A CD-ROM with complete documentation

4. OPERATION

The AD696/B base is designed to be used in conjunction with the AD615/S audio encoder system.

AD696/B allows an operator to transmit a message to a loudspeakers network for alerts or announcements.



The operator who has the AD696/A microphone base at his desk can launch an announcement on the network speaker in a simple way:

- Press the Talk button to spread the announcements and keep it pressed
- Speak clearly and quietly a second after pressing the button to give his announcement
- At the end of the announcement release the button

The selection lever on the AD615/S system must be in the central position. In case AD615/S is used for diffusion of background music in the environment, the lever must be placed upwards. For further information on the AD615/S system and its operation, refer to its specific user manual. Any background music broadcasted by AD615/S will be replaced by the microphone message during its emission.

The microphone volume adjustment trimmer in the AD615/S system must be set to $\frac{1}{4}$ turn from the minimum setting (if you want to check this, turn it all anticlockwise and then turn it in $\frac{1}{4}$ turn clockwise). Adjust it if necessary making some announcement tests if the announcement itself results in a non-optimal volume, each environment to has its own characteristics, for example it is noisy/silent, reverberating/sound-absorbing, ...

5. CONNECTION

The AD696/A microphone base is powered by the AD615/S system to which it must be directly connected.

Insert the 8-pole plug connector of the integral cable connected to AD696/A into the black RJ45 socket on the AD615/S module as clearly indicated in the photos below.

