



**THOMSON**

**Ringtones**

---



## Contents

1	Description .....	3
2	Make a melody .....	3
3	Integration of the rings with ST2030.....	5

## 1. Description

The ringtones which are integrated into the ST2030 use a RTTTL format. A ringing with RTTTL format looks like the following example:

```
Halloween:d=4,o=5,b=180:8d6,8g,8g,8d6,8g,8g,8d6,8g,8d#6,8g,8d6,8g,8g,8d6,8g,8g,8d6,8g,8d#6,8g,8c#6,8f#,8f#,8c#6,8f#,8f#,8c#6,8f#,8d6,8f#,8c#6,8f#,8f#,8c#6,8f#,8f#,8c#6,8f#,8d6,8f#
```

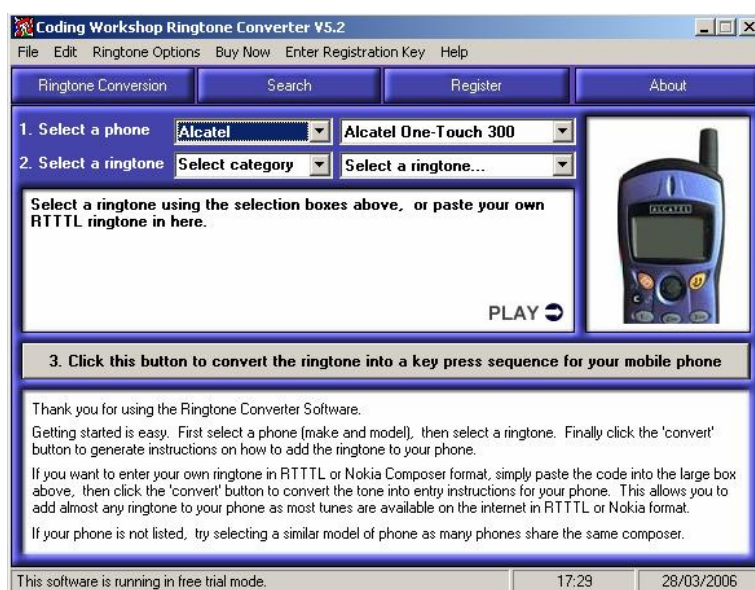
These ringtones can be created by the user and they can be also downloaded for free on Internet.

We give a series of specialized websites where you can find example of tones:

- [didier.elo.free.fr/ringtones.html](http://didier.elo.free.fr/ringtones.html)
- [www.xgsmonline.com/smartsmslogos.shtml](http://www.xgsmonline.com/smartsmslogos.shtml)
- [www.kortable.com/sonneries/sonneries-nokia-rtttl.asp](http://www.kortable.com/sonneries/sonneries-nokia-rtttl.asp)

## 2. Make a melody

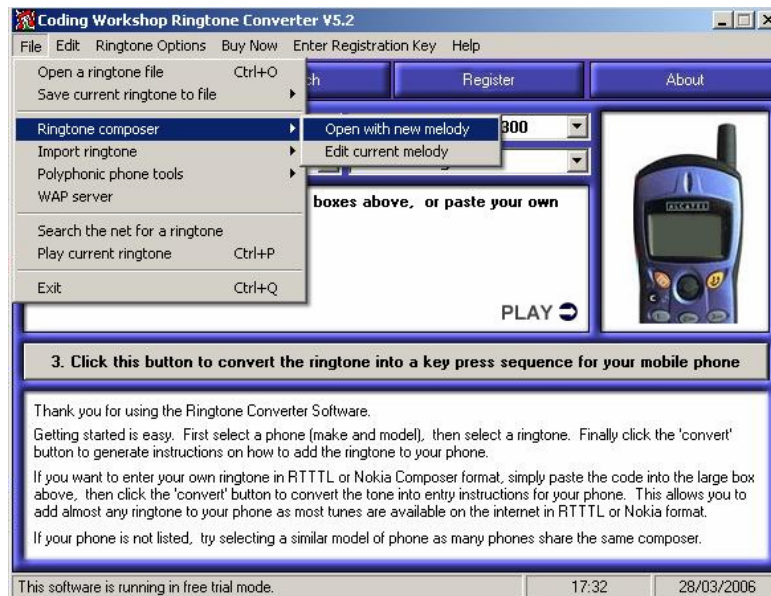
There is the software *Ringtone Converter* which is free and simple of use that we advise you.



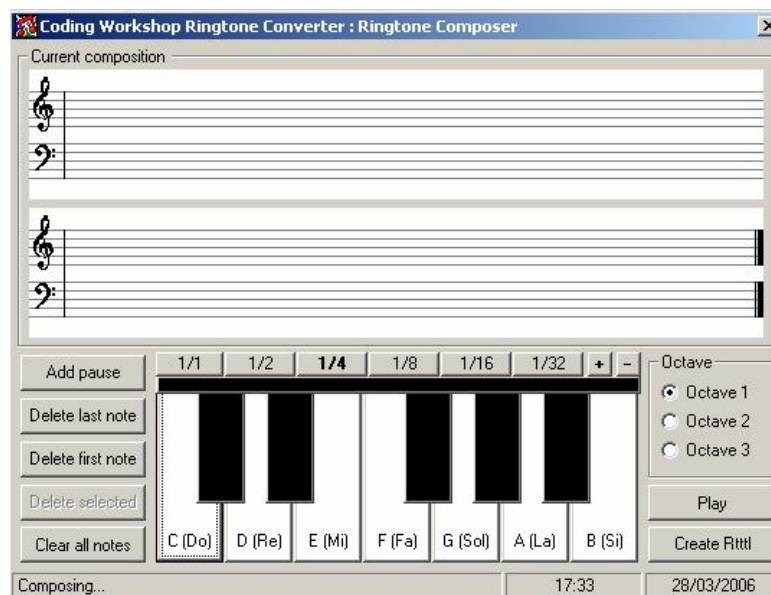
You can download this software here:

[www.codingworkshop.com/ringtones/](http://www.codingworkshop.com/ringtones/)

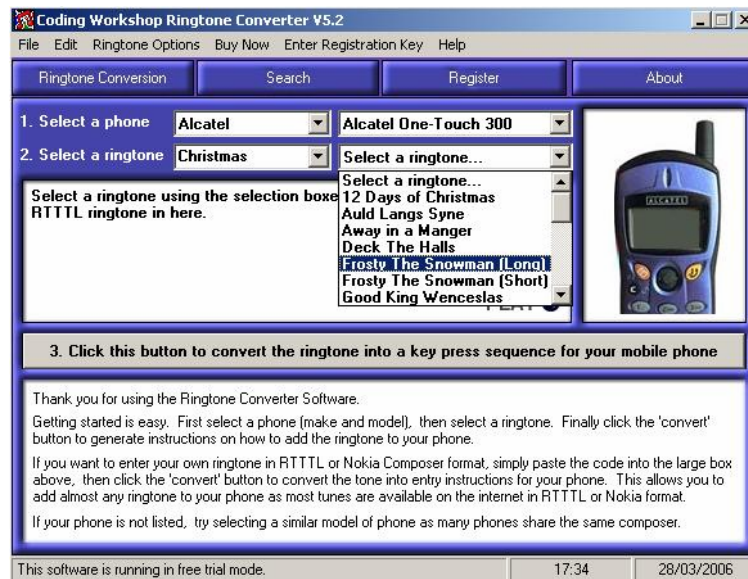
This software makes it possible to the user to create their own melodies directly with RTTTL format. For that, it is necessary to go in "File", "Ringtone composer" and finally "open with new melody"



The following screen is displayed and will make it possible to the user to compose the melodies according to its choice.

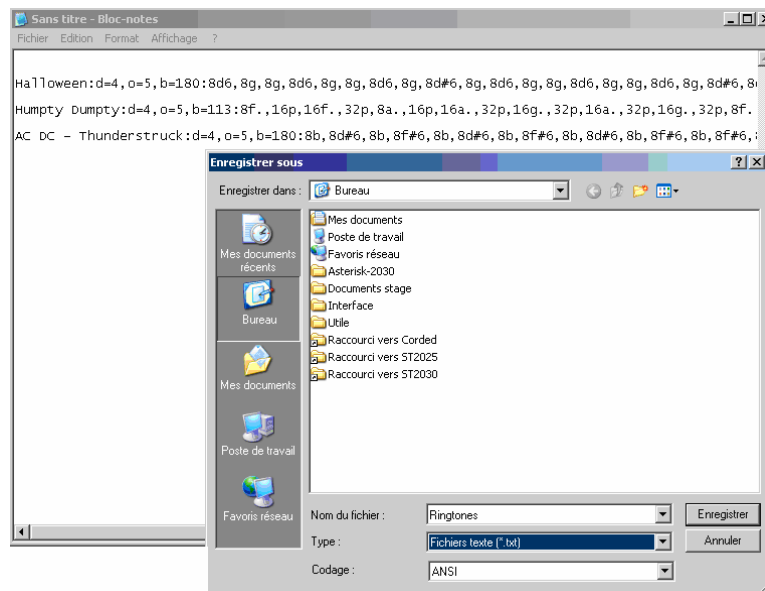


Moreover, a data base, already comprising a great number of melodies to RTTTL format, is integrated into this software. To reach these rings, it is necessary to carry out the handling which is presented to you on the screenshot below.



### 3. Integration of the rings with ST2030

In order to be able to integrate new ringtones, with RTTTL format, in his phone, the user must start by recopying all these rings with RTTTL format in a file with a txt extension. It is thus necessary to use software like *NotePad*.



Next we need to find the phone IP address. So:

If MGCP phone:

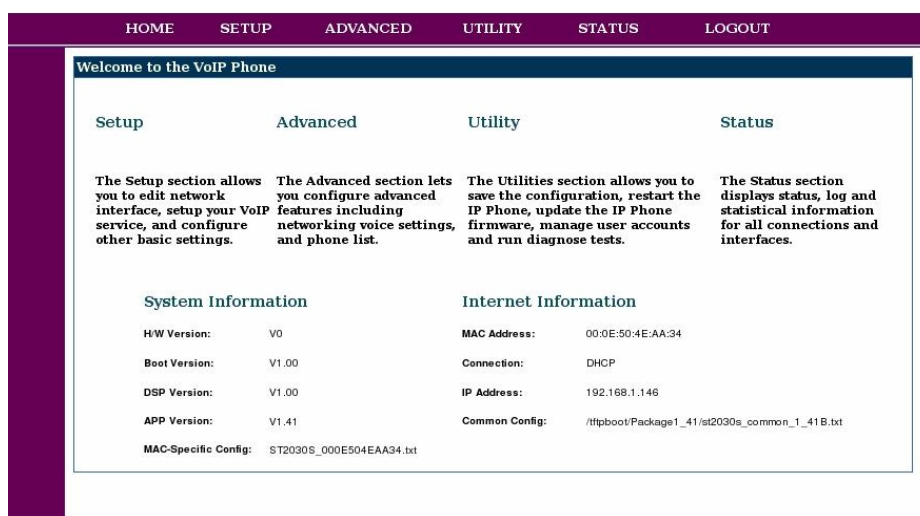
- Press on the key menu of the phone
- Press on the softkey admin
- Press on the button OK of the phone
- Select Network configuration while going down with the arrows
- Select IP address and note the address indicated

If SIP phone:

- Press on the key menu of the phone
- descend the cursor using the low button until Information
- Select Information and note the IP address indicated

IP address, that we recovered, must have returned in an Internet navigator (Mozilla, Internet explorer, etc.) in the following way: [adresseIPduTelephone/admin.html](http://adresseIPduTelephone/admin.html)

So this screen is displayed:



Next, we must click on « Advanced »:

The screenshot shows a web interface with a purple header and a sidebar. The header has tabs: HOME, SETUP, ADVANCED, UTILITY, STATUS, and LOGOUT. The sidebar lists various configuration categories: Networking (STUN, UPnP, SNTP, QoS, Ethernet Connection, Outbound Proxy), Voice Settings (SIP Signalling, Codec Setup, Option Configure, Call Feature), Advanced (selected), Dial Plan, Melody Management, Phone Lists (Phone Book, Remote Phone Book, Call Blocking), and Phone Lists. The main content area is titled 'Advanced' and contains a description: 'The Advanced section lets you configure advanced features including networking voice settings, and phone list.' Below this, there are two sections: 'Networking' and 'Voice Settings'. The 'Networking' section lists: STUN (Configure STUN server settings), UPnP (Configure UPnP settings), SNTP (Configure SNTP to configure time server on Internet), QoS (Configure quality of service settings), Ethernet Connection (Configure LAN's and PC's transmission), and Outbound Proxy (Configure Outbound Proxy settings). The 'Voice Settings' section lists: SIP Signalling (Configure the SIP signalling parameters), Codec Setup (Select to setup your preferred Codec), Option Configure (Configure call feature function to visible or invisible that effect), Call Feature (Select the telephone operations of call feature), and Advanced (Configure advanced telephone settings).

Lastly, it is necessary to select "Melody management" and to enter the name of the file (txt extension) which contains the rings while clicking on browser.

The screenshot shows the 'Melody Management' page in the same web interface. The sidebar is the same, but the 'Melody Management' option is highlighted. The main content area is titled 'Melody Management' and contains a section 'Add Ringer'. This section has a form with a label 'HTTP :', a text input field containing '/tftpboot/Ringtone.txt', a button labeled 'Parcourir...', and a 'Submit' button. Below this, there is a section 'TFTP :'. This section has a label 'IP :', a text input field with a dotted box for IP address, a label 'File name :', a text input field, and a 'Submit' button. Below the 'TFTP' section, there is a section 'Remove Ringer'. This section has a table with three columns: 'Index', 'Ringer', and 'Delete'. The table is currently empty.

**Note:** Soon the APS will be operational to update the rings with TFTP or HTTP.